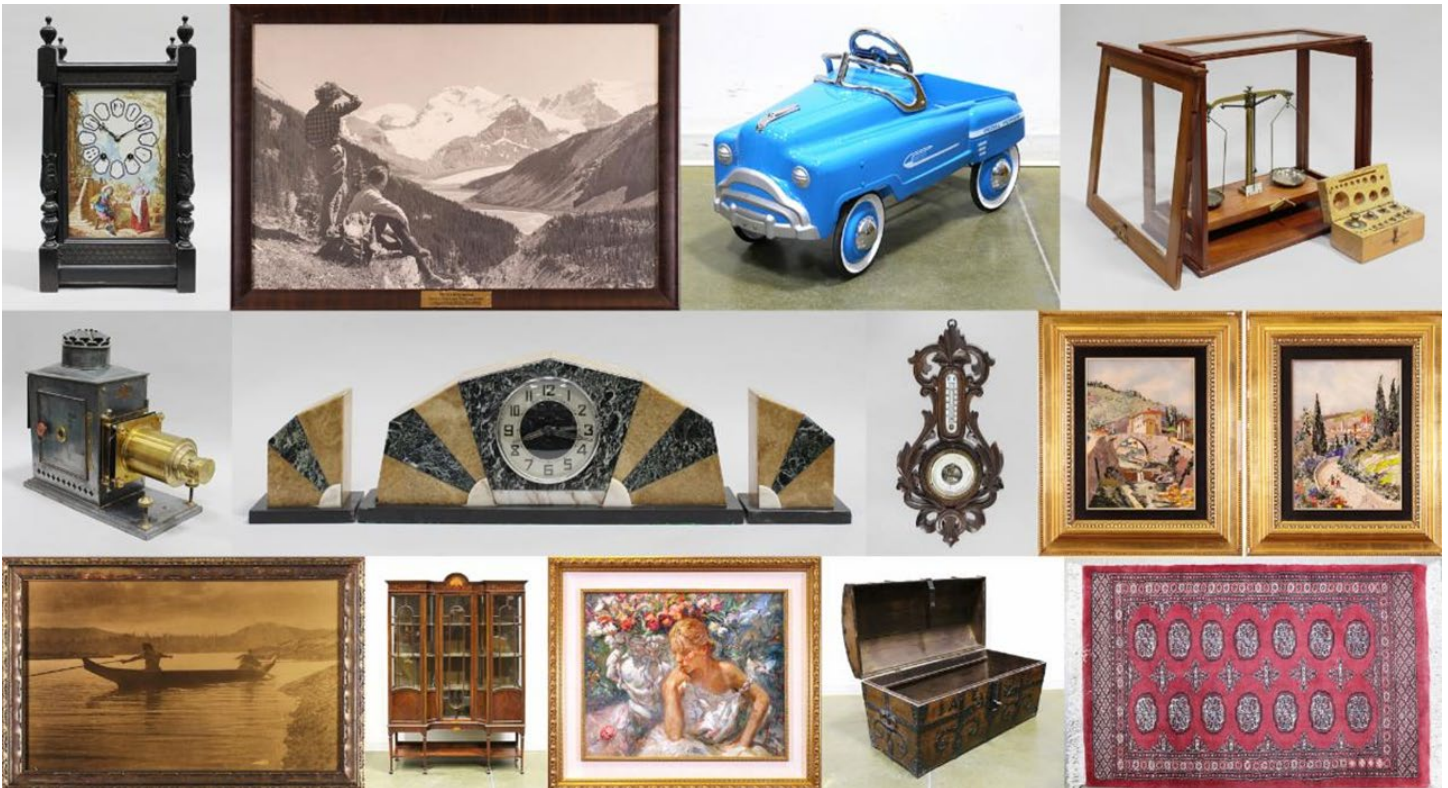


**Sunday, November 3<sup>rd</sup> @ 7 pm MT**



## Session One: Estate Furnishings, Antiques, Collectibles & Historical Artwork

This sale includes items from the collection of Bev & Victor Fortinski (Old Courthouse Antiques, Hanna AB), and features a broad selection of Estate & Antique Furnishings; Clocks; 19th @ 20th Century Continental & Canadian Artwork; Persian Carpets, Vintage Hand-Tint Photography; Persian Carpets and so much more!

## Showroom Previews

### Noon to 4 pm on the Following Days

**Friday, November 1<sup>st</sup> | Saturday, November 2<sup>nd</sup> | Sunday, November 3<sup>rd</sup>**

Participation in any auction on the Hodgins Halls Auction Group bidding website (the “Site”) is subject to the Terms and Conditions set by Hodgins Halls Auction Group (Hodgins Art Auctions Ltd. and/or Hall’s Auction Services Ltd.), the “Auctioneer”. The Auctioneer reserves the right to periodically modify the Terms and Conditions and it is the responsibility of the bidder to review and accept the Terms and Conditions prior to each auction registration.

1. Bidders are required to create an account on the Site and register to participate in any auction. All bidder information must be current, complete, and accurate. Bidders must be 18 years of age or older. A bidder will be suspended or permanently banned from the Site for providing false or fraudulent information (i.e. name, contact/mailling information, credit card).
2. A bidder is solely responsible for the security of the username and password on their bidding account, and for all bids placed on this account.
3. The Auctioneer reserves the right to refuse or rescind the registration of any bidder, and/or to refuse to recognize any or all bids from any bidder prior to or during an auction.
4. The Auctioneer reserves the right to pause, suspend, delay, or restart any auction in the event of technical difficulties or internet outage.
5. Although the Auctioneer takes great care and diligence in the cataloguing of lots offered for auction, all property is sold “as is”. All bidders are deemed responsible for informing themselves as to the condition, description accuracy and authenticity of lots, and a sale will not be rescinded on any grounds.

The Auctioneer does not include condition notes in the description of the lots. Bidders can inspect auction lots in person during the scheduled preview times. Photographs are provided as a guide to condition, and it is recommended that bidders review these closely. The Auctioneer will provide detailed condition reports upon request.

By placing a bid on the Site, you agree that you have either inspected the respective lot or have waived your right to do so.

6. Auction purchases are subject to a **20% Buyer’s Premium** on the bid (hammer) price.
7. Each item offered for auction is subject to a start price (minimum bid), below which the lot will not be sold.
8. By placing a bid on the Site, a bidder is making an offer to purchase the lot. A winning bid constitutes a contract to purchase the lot. A winning bidder who defaults on a purchase may be subject to suspension, permanent ban, or legal action.
9. The Auctioneer reserves the right to set a maximum credit card transaction limit on any auction or purchaser.
10. If the purchaser fails to pay for any lot within seven (7) days of the auction date, the Auctioneer may, without limitation of their rights against the buyer, resell any of the articles affected. In such case, the original buyer shall be responsible to the Auctioneer for:
  - (a) any deficiency in price between the re-sale amount and the amount that was due by the original buyer;
  - (b) any reasonable charge by the Auctioneer for the storage of such articles until payment and removal by the subsequent buyer;

(c) the amount of commission to which the Auctioneer would have earned had payment been made in full by the original buyer.

The Auctioneer shall not be liable for any loss or damage of any kind to the lot(s) after the expiration of seven (7) days from the date of the sale.

11. All auction purchases are subject to Goods and Services Tax (GST) on the bid (hammer) price and Buyer’s Premium.

Harmonized Sales Tax (HST), in rates applicable to the purchasing province, will apply unless the purchaser takes legal possession of purchases within Alberta. If a purchaser from an HST eligible province arranges their own shipping, then legal delivery is deemed to have occurred within Alberta and only GST shall apply.

It is the responsibility of the buyer to make all arrangements for packing, insuring, and transportation of purchased property. Any assistance or recommendation from the Auctioneer regarding third-party packing and/or transportation services is rendered as a courtesy and without any liability.

12. The buyer will comply with all laws and regulations regarding bidding, purchases, and transport of goods.

Wine and Spirits: The amount and/or type of alcoholic beverages purchased and transported to another province, state or country may be limited or entirely prohibited. The buyer is responsible for compliance with all applicable tax laws, duties and exportation/importation requirements. Each buyer represents and warrants that he or she will ensure that any purchased lots to be shipped will not be delivered to or received by any persons less than 18 years of age.

The purchaser(s) acknowledges that certain properties of Canadian cultural import may be subject to the provisions of Cultural Property Import and Export Act of Canada and/or the Convention on International Trade in Endangered Species of Wild Fauna and Flora Agreement (CITES)

13. As a result of your participation in our online auction, or by inclusion on our mailing and e-mail notification list, we may have collected some or all the following personal information: name, address, postal/zip code, telephone number, e-mail address, and credit card information. This information will only be used by the Auctioneer to provide you with information regarding our products and services, namely upcoming auctions, and events. The Auctioneer does not sell or rent this information.
14. This agreement comprises the entirety of the contract between the Auctioneer and the bidder and/or purchaser. The Auctioneer shall not be held liable for any representations not made in writing herein. This agreement shall be governed in accordance with the laws of the Province of Alberta. In the event of a dispute hereunder, the Buyer agrees to submit to the exclusive jurisdiction of the provincial courts and the federal courts sitting in the Province of Alberta.

## The Traditional Sale (Session One) 2024-10-18-2024-10-28

### LOT #

#### 1 GRAETZIN OUTDOOR ALCOHOL LAMP

Graetzin outdoor lamp, enameled and stamped metal body with hand-blown glass shade.

Length: 17 in.



Provenance: collection of Bev & Victor Fortinski, Calgary AB (Old Courthouse Antiques, Hanna AB)

60.00 - 80.00

#### 2 ANTIQUE OIL LANTERN LOT (2)

A tall Beacon lantern with clear hurricane glass insert and a smaller Dietz brand lantern with clear hurricane glass insert.

Height: 16 in. (and smaller)

80.00 - 120.00



#### 3 BEACON OIL LANTERN

Aluminum with clear hurricane glass insert and wire handle. Made in Canada.

Height: 15 in.

80.00 - 120.00



#### 4 BEACON OIL LANTERN

Red with clear hurricane glass insert and wire handle. Made in Canada.

Height: 15.5 in.

80.00 - 120.00



### LOT #

#### 5 ANTIQUE CPR LANTERN

Hiram L. Piper C.P.R. rail road lantern, with clear glass shades and wooden handle.

Height: 10 in. (without handle)

100.00 - 200.00



#### 6 RAYO KEROSENE LAMPS (2)

Two Rayo kerosene lamps. One Rayo Junior kerosene oil lamp. The lamp features a milk bubble glass shade and glass chimney. The font filler is marked: Rayo Junior, with the burner marked: Nov 20 -1894. A Rayo tin oil lamp. The lamp's font filler is marked Rayo. The burner is marked: Mar Rayo 24.96 FEB 28.05 Pat'D NOV. 20. 94

Height: 17.5 in.



Provenance: collection of Bev & Victor Fortinski, Calgary AB (Old Courthouse Antiques, Hanna AB)

80.00 - 100.00

#### 7 TWO TIER OIL LAMP

Amber glass, brass base, with gold accent lines, and a printed design of a shepherd with women reclining.

Height: 22 in.



Provenance: collection of Bev & Victor Fortinski, Calgary AB (Old Courthouse Antiques, Hanna AB)

80.00 - 100.00

## The Traditional Sale (Session One) 2024-10-18-2024-10-28

## LOT #

## 8 PAINTED OIL LAMP

A colorful painted oil lamp with brass painted stem, metal base, a heavy cut glass oil font, and clear glass oil chimney. The lamp is marked: Queen Mary.  
Height: 21 in.



Provenance: collection of Bev & Victor Fortinski, Calgary AB (Old Courthouse Antiques, Hanna AB)  
80.00 - 100.00

## 9 PAINTED OIL LAMP

A baby blue painted oil lamp with brass painted stem, brown paint to a metal base, a heavy cut glass oil font, and clear glass oil chimney. The lamp is marked: WHITE FLAME LIGHT CO. GRAND RAPID MICH.  
Height: 20.5 in.



Provenance: collection of Bev & Victor Fortinski, Calgary AB (Old Courthouse Antiques, Hanna AB)  
80.00 - 100.00

## 10 PAINTED OIL LAMP

A painted oil lamp with a ring of white painted around the font and base boast hand painted flowers. Marked Made in China to the brass switch.  
Size: 19.5 in.



Provenance: collection of Bev & Victor Fortinski, Calgary AB (Old Courthouse Antiques, Hanna AB)  
60.00 - 80.00

## 11 BLUE BEEHIVE OIL LAMP

Painted blue glass beehive font with glass chimney. The burner switch is marked: Made in Hong Kong.  
Size: 16 in.



Provenance: collection of Bev & Victor Fortinski, Calgary AB (Old Courthouse Antiques, Hanna AB)

## LOT #

60.00 - 80.00

## 12 CLEAR GLASS OIL LAMP

The lamp has a brass burner and a glass chimney. The lamp has light scratches to the hollow column and a small chip to the bottom of the font.  
Height: 18 in.



Provenance: collection of Bev & Victor Fortinski, Calgary AB (Old Courthouse Antiques, Hanna AB)  
60.00 - 80.00

## 13 CORRECT OIL LAMP

An oil lamp with a glass column, glass chimney, and brass burner. The burner is marked: Correct.  
Height: 21 in.



Provenance: collection of Bev & Victor Fortinski, Calgary AB (Old Courthouse Antiques, Hanna AB)  
60.00 - 80.00

## 14 BANQUET OIL LAMP

Banquet style oil lamp with brass column, brass font, and glass chimney. The burner switch is marked: Youngs central draught 20 court.  
Height: 28 in.



Provenance: collection of Bev & Victor Fortinski, Calgary AB (Old Courthouse Antiques, Hanna AB)  
80.00 - 100.00

## 15 ALADDIN 21C OIL LAMP

Aladdin 21C oil lamp in Washington drape design with marked Aladdin glass chimney.. The burner is marked: GB PAT NO. 717048 ALADDIN NO 21 C MADE IN ENGLAND GB PAT NO. 8 694273-4.  
Height: 24 in.



Provenance: collection of Bev & Victor Fortinski, Calgary AB (Old Courthouse Antiques, Hanna AB)



## The Traditional Sale (Session One) 2024-10-18-2024-10-28

## LOT #

80.00 - 100.00

**16 LINCOLN DRAPE ALADDIN OIL LAMP**

Pressed glass Aladdin oil lamp in Lincoln drape design. With a brass burner and metal flute cover. Marked Mantle Lamp Co- Nu Type Model B.- Made in USA Chicago IL, on the dial.



Height: 24 in.

Provenance: collection of Bev & Victor Fortinski, Calgary AB (Old Courthouse Antiques, Hanna AB)  
100.00 - 150.00

**17 ALADDIN OIL LAMP**

Aladdin oil lamp. A clear glass lamp in the Washington drape style with frosted glass chimney. The burner switch is marked: Model C Aladdin Industries Nashville, Tenn. U.S.A. The lamp has a small chip to the font section.



Height: 22 in.

Provenance: collection of Bev & Victor Fortinski, Calgary AB (Old Courthouse Antiques, Hanna AB)  
80.00 - 100.00

**18 AMBER ALADDIN OIL LAMP**

Aladdin oil lamp. An amber glass lamp in the Lincoln drape style. The burner switch is marked: Aladdin 23.



Height: 13 in.

Provenance: collection of Bev & Victor Fortinski, Calgary AB (Old Courthouse Antiques, Hanna AB)  
60.00 - 80.00

## LOT #

**19 COLOURED GLASS OIL LAMPS (2)**

Amber glass font, tin column and stone base. The burner is marked Victoria. The second lamp has a pale purple glass font with copper column and stone base. Height: 14 in.



Provenance: collection of Bev & Victor Fortinski, Calgary AB (Old Courthouse Antiques, Hanna AB)  
60.00 - 80.00

**20 ALADDIN MODEL B OIL LAMP**

Milk glass Aladdin model B oil lamp. The lamp features the diamond quilt design, Aladdin marked glass chimney with metal column connection and brass burner. The burner is marked: Mantle Lamp Co. Nu-Type Model B Aladdin Chicago, Ill. Height: 24.5 in.



Provenance: collection of Bev & Victor Fortinski, Calgary AB (Old Courthouse Antiques, Hanna AB)  
80.00 - 100.00

**21 ALADDIN 23 HANGING OIL LAMP**

Brass font, glass chimney, and metal hanging attachment. The burner switch is marked and reads: Aladdin 23. Height: 25 in.



Provenance: collection of Bev & Victor Fortinski, Calgary AB (Old Courthouse Antiques, Hanna AB)

60.00 - 80.00

**22 PAINTED OIL LAMP**

Oil lamp with glass chimney. The lamp has painted flowers on raised milk glass on a rusted leaf base. Height: 19 in.



Provenance: collection of Bev & Victor Fortinski, Calgary AB (Old Courthouse Antiques, Hanna AB)

## The Traditional Sale (Session One) 2024-10-18-2024-10-28

## LOT #

60.00 - 80.00

**23 DROP IN BEEHIVE OIL LAMP**

Ornate footed base, brass scroll handles, drop in beehive font and bulbous glass chimney. The switch is marked Made in the US of America.

Size: 13 x 12 x 8 in.

Provenance: collection of Bev & Victor Fortinski, Calgary AB (Old Courthouse Antiques, Hanna AB)  
100.00 - 150.00

**24 BRASS LEAF OIL LAMP**

Brass oil lamp with drop-in brass font, leaf design, brass ornate footed base. The brass burner is marked: 20 Matador Brenner. Minor loss to the leaf design.  
Height: 15 in.

Provenance: collection of Bev & Victor Fortinski, Calgary AB (Old Courthouse Antiques, Hanna AB)  
60.00 - 80.00

**25 SUCCESS OIL LAMP**

Painted milk glass, brass footed base, with drop in brass font. The burner switch is marked Success, the burner top is marked Naugatuck.  
Height: 15 in.

Provenance: collection of Bev & Victor Fortinski, Calgary AB (Old Courthouse Antiques, Hanna AB)  
60.00 - 80.00

**26 GONE WITH THE WIND STYLE LAMP**

Baluster form body with rose motif painted body, milk glass globe with clear chimney.  
Height: 27 in.  
150.00 - 250.00



## LOT #

**27 PAINTED HANGING PARLOUR LAMP**

Milk glass painted hanging parlour lamp. The lamp features two tiers of crystal drops, brass frame and flower design on both dome and oil font.  
Height: 32 in.

Provenance: collection of Bev & Victor Fortinski, Calgary AB (Old Courthouse Antiques, Hanna AB)  
100.00 - 150.00

**28 HANGING PARLOUR LAMP**

Hanging parlour lamp. Painted milk glass dome with flower design, crystal drops, a glass oil font marked BH, brass frame; with hanging adjustable weight.  
Height: 31 in.

Provenance: collection of Bev & Victor Fortinski, Calgary AB (Old Courthouse Antiques, Hanna AB)  
100.00 - 150.00

**29 HANGING PARLOUR LAMP**

Hanging parlour lamp. Painted milk glass dome with flower design, an oil lamp chimney, and a brass frame with crystal drops. The brass font is marked B&H.  
Height: 44 in.

Provenance: collection of Bev & Victor Fortinski, Calgary AB (Old Courthouse Antiques, Hanna AB)  
100.00 - 150.00

**30 CHANDELIER WITH GLASS SHADE**

A brass and metal chandelier with four elaborate upturned branches and glass shade.  
Size: 34 x 29 x 29 in.

Provenance: collection of Bev & Victor Fortinski, Calgary AB (Old Courthouse Antiques, Hanna AB)  
120.00 - 180.00



## The Traditional Sale (Session One) 2024-10-18-2024-10-28

**LOT #****31 ANTIQUE CEILING FIXTURE**

Three arm ceiling light fixture with upturned petal form amber glass shades. Two shades have cracks.  
Length: 14 in.  
100.00 - 200.00

**32 BRASS CEILING FIXTURE**

Three arm brass ceiling light fixture with down turned frosted tulip shades.  
Length: 14 in.  
100.00 - 200.00

**33 BRASS WALL SCONCES (5)**

A matching set of English imported brass wall sconces with a traditional scroll design, four with a frosted glass hurricane shade.  
Sconce Height (Assembled): 12 in.  
150.00 - 200.00

**34 SCONCE PAIR (2)**

With brass torch body and upturned frosted glass tulip shades.  
Size:  
120.00 - 200.00

**35 ANCHOR COPPER & BRASS SHIP LANTERN**

Solid copper and brass ship lantern. The lantern has been fashioned into a table lamp. The lamp features a mounted wooden base, fresnel glass, and a hinged top with brass hasp. The lantern is marked with two welded plates: Anchor and Meteorite P.No. 9092.  
Size: 20 x 10 in.  
200.00 - 300.00

**LOT #****36 VINTAGE MODEL SHIPS (2)**

Two hand crafted model ships including The USS Constitution and Blue Nose. Both mounted to wooden platforms.  
Size: 26.5 x 25 in. (and smaller)  
200.00 - 300.00

**37 YANKEE CLIPPER THREE MASTED MANTLE CLOCK**

1950s Mastercrafters clock with solid wood base and chromium sails and masts. Clock movement by Sessions.  
Size: 16.5 x 19 x 3.25 in.  
60.00 - 80.00

**38 HOUDIN BRASS MANTEL CLOCK**

A brass mantel clock with decorative cornice and applique, topped by a floral urn with scroll, lion handles and sculpted feet. The clock face has glass cover, with minor scratches; and reads Houdin- 4 rue St. Gilles to the dial. Inner Pendulum marked 871 to workings. With winding key  
Size: 17 x 9 x 6 in.



Provenance: collection of Bev & Victor Fortinski, Calgary AB (Old Courthouse Antiques, Hanna AB)  
200.00 - 300.00

**39 FRENCH MINIATURE MANTEL CLOCK**

Miniature mantel clock, reads French make on dial. Brass design to the back of the clock. Minor wear to the case and crazing to the porcelain dial.  
Size: 7 x 6 x 3 in.



Provenance: collection of Bev & Victor Fortinski, Calgary AB (Old Courthouse Antiques, Hanna AB)  
40.00 - 50.00

## The Traditional Sale (Session One) 2024-10-18-2024-10-28

## LOT #

**40 SMITHS MANTLE CLOCK**

A wooden mantle clock manufactured by Smiths. Clock features a metal face with fixed glass door. "Made in England" noted to face, "Smiths English Clocks" noted to movement casing.

Size: 8.5 x 9 x 3 in.

80.00 - 120.00

**41 DESK CLOCK SET (2)**

Miniature mantle clocks. A bronze New Haven clock with floral finials. The New Haven clock is missing the black plate. A stone cased German clock with brass gilt casing.

Size: 7 x 5 in. (New Haven) 5 x 5 in. (Stone)

Provenance: collection of Bev & Victor Fortinski, Calgary AB (Old Courthouse Antiques, Hanna AB)

40.00 - 50.00

**42 FORESTVILLE JEWELLED MANTLE CLOCK**

A wooden mantle clock manufactured by Forestville. Clock features metal face and trim, and swinging glass door. Face reads "Forestville. Jewelled. Made in Germany." Movement marked "9/61"

Size: 9 x 18 x 4 in.

100.00 - 150.00

**43 INGRAHAM MANTEL CLOCK**

A Ingraham mantel clock. The clock face features brass glass cover with the metal dial reads: Ingraham Eight day Made In Bristol. Conn U.S.A. The back plate holds direction paper reading Essex 1898. Light wear to wooden case.

Size: 10.5 x 9 x 4.5 in.

Provenance: collection of Bev & Victor Fortinski, Calgary AB (Old Courthouse Antiques, Hanna AB)

100.00 - 150.00



## LOT #

**44 18th CENTURY FLEMISH WALL CLOCK**

Wooden cased wall clock with finials and turned posts. Sloping base detaches from the clock piece. Artwork is signed "H. Desprez." The artwork of H. Desprez is often found displayed on urns of the period. Includes pendulum and key.

Height: 22 in. (overall)

150.00 - 250.00

**45 MANTEL CLOCK**

Black Mantel clock. The clock features green stone accents and floral etchings. The clock face has a glass cover and black dial. The inner workings of the clock are marked RS 1286. Two chips to the middle and base of the left section.

Size: 20 x 15 x 6 in.

Provenance: collection of Bev & Victor Fortinski, Calgary AB (Old Courthouse Antiques, Hanna AB)

100.00 - 150.00

**46 KUNDO PAINTED BLACK ANNIVERSARY CLOCK**

Kundo anniversary clock brass painted black with floral additions. The enamel dial reads Kundo, Germany, and the movement is marked: Kieninger & Obergfell Made In West Germany. With a painted torsion pendulum.

Size: 12 x 8 x 8 in.

Provenance: collection of Bev & Victor Fortinski, Calgary AB (Old Courthouse Antiques, Hanna AB)

40.00 - 50.00

**47 KUNDO PAINTED WHITE ANNIVERSARY CLOCK**

Kundo anniversary clock brass painted white with floral additions. The dial reads Kundo, Germany, and the movement is marked: Kieninger & Obergfell Made In West Germany. With a painted torsion pendulum. Glass dome has slight chip, not in working condition pendulum is not





## The Traditional Sale (Session One) 2024-10-18-2024-10-28

## LOT #

attached.  
Size: 12 x 8 x 8 in.

Provenance: collection of Bev & Victor Fortinski, Calgary AB (Old Courthouse Antiques, Hanna AB)  
40.00 - 50.00

**48 FIGURAL HORSE GARNITURE SET (3)**

A gilt figural clock of a man rearing a horse. Roman numerals on a porcelain face. Pendulum and key included.

Size: 15.5 x 13 in.

A pair of German porcelain figurines depicting a man rearing a wild horse. (damage to one horse's leg)

Size: 9.5 x 7.5 in.

150.00 - 250.00

**49 ANSONIA MANTEL CLOCK**

Iron Ansonia mantel clock. The clock features a double column and etched floral design. The clock face has a gilt glass cover and enameled dial. The metal backing is missing a screw, with the inner workings marked Ansonia Clock Co. Patented June 14.81 New York U.S.A. The base of the clock has a small chip to the bottom right.  
Size: 17 x 15 x 5.5 in.



Provenance: collection of Bev & Victor Fortinski, Calgary AB (Old Courthouse Antiques, Hanna AB)  
100.00 - 150.00

**50 BRASS KUNDO ANNIVERSARY CLOCK**

Brass Kundo anniversary clock with floral etched design to brass pillars. Kundo enameled dial is marked as made in Germany. with a glass dome and torsion pendulum. Wear to the brass base.  
Size: 12 x 8 x 8 in.



Provenance: collection of Bev & Victor Fortinski, Calgary AB (Old Courthouse Antiques, Hanna AB)  
40.00 - 50.00

## LOT #

**51 ENFIELD WOOD MANTEL CLOCK**

Smith Enfield wood mantel clock with inner pendulum and twisted pillar design. The clock face has a brass and glass cover with the dial reading Smith Enfield Made in Great Britain on top of a leaf design. Marked Smith Enfield Made in Great Britain by the Enfield Clock Co. to the back of the movement.

Size: 9.5 x 13 x 4 in.

Provenance: collection of Bev & Victor Fortinski, Calgary AB (Old Courthouse Antiques, Hanna AB)  
60.00 - 80.00

**52 H.A.C WOODEN MANTLE CLOCK**

A wooden mantle clock manufactured by Hamburg American Clock Company. Plaque on inside of rear door reads "H.A.C. Make. Made in Wurttemberg, Germany". Clock features a tin face with swinging glass cover and banded wood inlay.

Size: 8.5 x 10 x 4.5 in.

100.00 - 150.00

**53 SMITHS ELECTRIC MANTLE CLOCK**

A wooden mantle clock manufactured by Smiths. Clock features a metal face, fixed glass door, and wall plug to rear. Marked "Smiths Electric. Made in England" to face.  
Size: 5.5 x 10 x 3 in.

80.00 - 120.00

**54 SESSIONS MANTLE CLOCK**

A mantle clock manufactured by Sessions. Clock features a porcelain face with swinging glass door. Face reads "Made by the Sessions Clock Co. Forestville, Conn. U.S.A.". Damage noted to door hinge and hour hand. Missing back panel.

Size: 10.5 x 15 x 6.5 in.

80.00 - 120.00



## The Traditional Sale (Session One) 2024-10-18-2024-10-28

## LOT #

**55 PERIVALE MANTEL CLOCK**

Wood mantel clock with inner pendulum, winding key and brass glass cover. The plastic cream dial reads Made in Great Britain. The movement is marked with the Perivale logo.

Size: 9 x 12 x 4 in.

Provenance: collection of Bev & Victor Fortinski, Calgary AB (Old Courthouse Antiques, Hanna AB)  
80.00 - 100.00

**56 SCHATZ 400 DAY ANNIVERSARY CLOCK**

SCHATZ 400 Day anniversary clock brass London coach case with glass sides and brass backing. The clock has torsion pendulum and is latched at base. Dial reads Schatz 400 Made in Germany.

Size: 9 x 5 x 4 in.

Provenance: collection of Bev & Victor Fortinski, Calgary AB (Old Courthouse Antiques, Hanna AB)  
40.00 - 50.00

**57 GENERAL ELECTRIC PLUG-IN MANTEL CLOCK**

A mantle clock manufactured by general electric. Clock is plastic and powered by a wall plug to the rear. Marked as Model No. 8101 to bottom.

Size: 8.5 x 5.5 x 3 in.

40.00 - 60.00

**58 ART DECO STONE GARNITURE SET**

Mantle clock garniture set. Multiple stone types on a black base. The clock has a glass cover and winding key. Chip to bottom left corner of the

Size: 9.5 x 23 x 5 in. Clock,  
7 x 6 x 4 in. End.

Provenance: collection of Bev & Victor Fortinski, Calgary AB (Old Courthouse Antiques, Hanna AB)  
100.00 - 150.00



## LOT #

**59 JUNGHANS STEEPLE MANTLE CLOCK**

A wooden mantle clock manufactured by Junghans. Clock features a paper face and swinging glass door. Marked "Junghans" to face. Losses to base trim and front wooden design noted.

Size: 20 x 13 x 6 in.

80.00 - 120.00

**60 E. INGRAHAM GINGER BREAD MANTLE CLOCK**

A wooden ginger bread mantle clock manufactured by E. Ingraham. Clock features a metal and paper face, with painted swinging glass door. Face reads "Made by the E. Ingraham Co. Bristol, Conn, USA."

Size: 22 x 14.5 x 5 in.

100.00 - 200.00

**61 KIENZLE MANTEL CLOCK**

Sunken brass case with glass cover and white dial with 2 subsidiary dials. The Kienzle Uhren logo can be found at the center of the main dial. The clock features multiple adornments including gilt scroll, lion handles, and cornice.

Size: 10.5 x 6.25 x 4.5 in.

Provenance: collection of Bev & Victor Fortinski, Calgary AB (Old Courthouse Antiques, Hanna AB)  
60.00 - 80.00

**62 FORESTVILLE WOODEN MANTLE CLOCK**

A mantle clock manufactured by Forestville Clock Company. Clock features a metal face and swinging wood and glass door. Face is marked "Forestville. Made in Canada".

Size: 9.5 x 16 x 5.5 in.

100.00 - 150.00



## The Traditional Sale (Session One) 2024-10-18-2024-10-28

## LOT #

**63 WESTERN CLOCK COMPANY LTD. "PEMBROKE" MANTLE CLOCK**

A wooden mantle clock manufactured in Seth Thomas. Clock features a metal and plastic face with a swinging glass door. Face marked "Made in Seth Thomas, Canada". Movement marked "No. 124. Made in U.S.A."

Size: 9 x 17 x 6 in.

100.00 - 150.00

**64 ENFIELD ART DECO MANTEL CLOCK**

Smith Enfield wood mantel clock with inner pendulum and carved legs. The clock face has a glass chrome cover with patterned plastic dial. Marked Smith Enfield Made in Great Britain by the Enfield Clock Co. to the back of the movement. Light scratches on the wooden case.

Size: 7.5 x 9 x 4.5 in.



Provenance: collection of Bev & Victor Fortinski, Calgary AB (Old Courthouse Antiques, Hanna AB)

60.00 - 80.00

**65 H.A.C MINIATURE MANTLE CLOCK**

An metal mantle clock in a lantern style manufactured by the Hamburg American Clock Company. Clock features a fixed glass window and see-through glass panels to side. Music box chime.

Size: 6 x 5.5 x 4 in.

80.00 - 120.00

**66 KUNDO ANNIVERSARY CLOCK**

The glass domed brass clock features a rotary pendulum and is marked Kundo to dial, and 'Made in Germany' to case.

Size: 8 x 6 in.



Provenance: collection of Bev & Victor Fortinski, Calgary AB (Old Courthouse Antiques, Hanna AB)

60.00 - 80.00

## LOT #

**67 FOREIGN MANTLE CLOCK**

A wooden mantle clock manufactured by Foreign. Clock features a metal face and swinging glass door. Losses to hands noted.

Size: 9 x 13 x 8 in.

80.00 - 120.00

**68 SMITHS MANTLE CLOCK**

A wooden mantle clock manufactured by Smiths. Clock features a metal face and swinging glass door. "Smiths, Enfield" noted to face and movement.

Size: 9.5 x 13 x 5 in.

100.00 - 150.00

**69 JUNGHANS MANTEL CLOCK**

A Junghans mantel clock with inner pendulum, pediment top. glass cover, and metal dial. A scratch to the left side of the case.

Size: 15 x 10 x 6 in.



Provenance: collection of Bev & Victor Fortinski, Calgary AB (Old Courthouse Antiques, Hanna AB)

100.00 - 150.00

**70 SESSIONS GINGER BREAD MANTLE CLOCK**

A wooden ginger bread mantle clock manufactured by Sessions. Clock features a paper face with outer date ring, and swinging painted glass door. Face reads "Sessions. Made in U.S.A." Loss to hands noted.

Size: 23 x 15 x 5 in.

100.00 - 150.00



## The Traditional Sale (Session One) 2024-10-18-2024-10-28

## LOT #

## 71 NEW HAVEN MANTLE CLOCK

An oak gingerbread mantle clock with brass pendulum, winding key, painted medal dial and glass door with painted design. The dial reads: Made By New Haven Clock Co.- New Haven, Conn U S A.

Size: 22 x 14.5 x 5 in.

Provenance: collection of Bev & Victor Fortinski, Calgary AB (Old Courthouse Antiques, Hanna AB)  
120.00 - 180.00



## 72 TELECHRON ELECTRIC CLOCK

Vintage Telechron clock with inlaid border and plastic cover. The dial reads Telechron - Warren Telechron CO. Ashland, Mass U.S.A. The back of the clock has an electric cord and a plaque with additional information which reads: Telechron electric clock model 6801. The clock has paint loss to the black base.

Size: 8.5 x 11 x 4 in.

Provenance: collection of Bev & Victor Fortinski, Calgary AB (Old Courthouse Antiques, Hanna AB)  
60.00 - 80.00



## 73 555 ART DECO MANTEL CLOCK

A 555 art deco mantel clock, with leaf motif, inner pendulum, and winding key. The clock is missing its face cover, and has a plastic and wood dial. Marked Made in China to movement.

Size: 9 x 13 x 4.5 in.

Provenance: collection of Bev & Victor Fortinski, Calgary AB (Old Courthouse Antiques, Hanna AB)  
40.00 - 60.00



## LOT #

## 74 PERIVALE WOOD MANTEL CLOCK

Wooden Mantle clock with inner pendulum, winding key, and is missing glass to cover. The tin dial reads Bentima - Made in England. Marked Perivale all British clocks to the movement. With light scratches to the base of the clock.

Size: 8.5 x 11 x 4 in.

Provenance: collection of Bev & Victor Fortinski, Calgary AB (Old Courthouse Antiques, Hanna AB)  
60.00 - 80.00



## 75 SMITHS MANTLE CLOCK

A wooden mantle clock manufactured by Smiths. Clock features a metal face with fixed glass door. "Smiths. 8 Day. Made in Great Britain" noted to face, "Smiths Industries Limited Clock & Watch Division" noted to movement casing.

Size: 6 x 10 x 2.5 in.

80.00 - 120.00



## 76 KERN 400 ANNIVERSARY CLOCK

Brass Kern 400 day clock, features a glass dome with etched pillars and torsion pendulum. The clock is marked Kern West Germany to the dial and K.u.S.-S Germany No (o) Jewels Unadjusted to the back.

Size: 8 x 5 x 5 in.

Provenance: collection of Bev & Victor Fortinski, Calgary AB (Old Courthouse Antiques, Hanna AB)  
20.00 - 30.00



## 77 MAUTHE MANTLE CLOCK

A wooden mantle clock manufactured by Mauthe. Clock features a painted metal face with swinging glass door. Face reads "Mauthe. Made in Germany"

Size: 8.5 x 20 x 6 in.

80.00 - 120.00





## The Traditional Sale (Session One) 2024-10-18-2024-10-28

## LOT #

## 78 BRASS LANTERN STYLE MANTEL CLOCK

A Brass lantern mantel clock featuring three ornate fretwork panels surrounded by urn finials, which hold up the bell. The brass clock has an engraved dial and front with inner pendulum working and is elevated by four small balled feet. The inner workings are marked: 11-1027064. Size: 15.5 x 6.5 x 5.5 in.



Provenance: collection of Bev & Victor Fortinski, Calgary AB (Old Courthouse Antiques, Hanna AB)  
200.00 - 300.00

## 79 SCHATZ ROYAL MARINER CLOCK

Schatz Royal Mariner clock features a brass case with a glass cover over white dial. Marked Schatz Royal Mariner to dial. Size: 7 x 7 x 4 in.



Provenance: collection of Bev & Victor Fortinski, Calgary AB (Old Courthouse Antiques, Hanna AB)  
200.00 - 300.00

## 80 JEROME &amp; CO WOODEN MANTLE CLOCK

A cathedral design wooden mantle clock manufactured by Jerome & Co. Clock features a metal face and swinging glass door. Damage to sides of base noted. One finial repaired, one shows minor loss. Size: 16 x 9 x 4 in.  
80.00 - 120.00



## 81 ANSONIA MANTLE CLOCK

A wooden gingerbread mantle clock with brass pendulum, winding key, glass door, brass and paper dial. The dial reads: Manufactured by the Ansonia Clock Co. New York, United States of America. Size: 22 x 14.5 x 5 in.



Provenance: collection of Bev & Victor Fortinski, Calgary AB (Old Courthouse Antiques, Hanna AB)

## LOT #

100.00 - 150.00

## 82 NEW HAVEN MANTEL CLOCK.

New Haven mantel clock . The clock features a painted metal case with an inner pendulum. The clock face has a glass cover, and enamel dial. The inner workings are marked: New Haven trademark U.S.A. Size: 11.5 x 9 x 5 in.



Provenance: collection of Bev & Victor Fortinski, Calgary AB (Old Courthouse Antiques, Hanna AB)  
80.00 - 120.00

## 83 SUMMERFIELD MANTLE CLOCK

A wooden mantle clock manufactured by David Summerfield. Clock features metal face and swinging metal window. Face reads "David Summerfield. Newcastle on Tyme." Glass on swinging door is missing. Size: 9 x 14 x 6 in.  
80.00 - 120.00



## 84 GILBERT WOODEN MANTLE CLOCK

A wooden mantle clock manufactured by Gilbert. Clock features a paper face and swinging glass door. Face is marked "Gilbert. Made in Winstead Conn, United States of America". Loss noted to hour hand. Size: 8 x 18 x 3 in.  
80.00 - 120.00



## 85 TAMBOUR MANTEL CLOCK

Tambour Mantel clock with inlaid wood design. The clock has a crack through the glass cover and loss to the left section of the wooden case. Size: 6 x 10 x 3 in.



Provenance: collection of Bev & Victor Fortinski, Calgary AB (Old Courthouse Antiques, Hanna AB)  
40.00 - 50.00

## The Traditional Sale (Session One) 2024-10-18-2024-10-28

## LOT #

**86 ENFIELD ART DECO MANTEL CLOCK**

Art deco mantel clock with chrome accents .The clock face chrome dial is marked Enfield-Made in England. With inner pendulum, winding key, and marked Made in England with patent number 421434. The clock face has loose glass cover and scratches and wear to the case. Size: 9 x 12 x 5 in.



Provenance: collection of Bev & Victor Fortinski, Calgary AB (Old Courthouse Antiques, Hanna AB)  
40.00 - 50.00

**87 SIMPLEX PUNCH TIME CLOCK**

A metal time recorder clock with an electric cord. The dial reads: Simplex time recorder CO Gardner Mass. U.S.A. Model number JGG10R4. Size: 9.5 x 6 x 8.5 in.



Provenance: collection of Bev & Victor Fortinski, Calgary AB (Old Courthouse Antiques, Hanna AB)  
60.00 - 80.00

**88 H.A.C. WOODEN MANTLE CLOCK**

A wooden mantle clock manufactured by the Hamburg American Clock Corporation. Clock features metal face with swinging glass door. Movement has H.A.C logo stamped. Damage to glass door hinge noted. Size: 14.5 x 9 x 5 in.  
80.00 - 120.00

**89 JUNGHANS WOODEN MANTLE CLOCK**

A cathedral design mantle clock manufactured by Junghans. Clock features porcelain and metal face, and swinging glass door. Marked "Junghans" to movement. Size: 15 x 11.5 x 6 in.  
100.00 - 200.00



## LOT #

**90 INTERNATIONAL TIME RECORDING CO. PUNCH CLOCK**

A wall mounted punch clock manufactured by International Time Recording Co. in Endicott N.Y. USA. Clock features a swinging glass door, hinged base, and painted metal face. Serial No. 43401. Size: 32 x 13.5 x 10 in.  
300.00 - 500.00

**91 DEY TIME REGISTER**

A wooden Dey Time Register made in Syracuse N.Y. Clock features swinging doors to sides, and glass windows to front. Size: 35 x 17 x 17 in.  
200.00 - 400.00

**92 SETH THOMAS AMERICAN REGULATOR WALL CLOCK**

A wooden cased wall clock with a painted metal face and painted glass panels to the front, one depicting the Capital at Albany, NY, the other a floral design. Manufactured for S.J. Southworth by Seth Thomas. Size: 33 x 19 x 6 in.  
200.00 - 400.00

**93 REGULATOR WALL CLOCK**

A wooden cased hanging wall clock with carved features to the front, a porcelain clock face, and wooden and brass pendulum. Damage noted to front of clock and repair to top finial. Size: 50 x 17 x 8 in.  
150.00 - 250.00



## The Traditional Sale (Session One) 2024-10-18-2024-10-28

**LOT #****94 WAG ON WALL CLOCK**

Brass Wag on the Wall clock. The clock has an ornate repoussé border and pendulum with enameled dial and weights. The repoussé pendulum features a floral and urn design. Painted details to the bronze, with some paint loss, and cracks to the enameled dial.

Size: 49 x 13 in.

Provenance: collection of Bev & Victor Fortinski, Calgary AB (Old Courthouse Antiques, Hanna AB)  
120.00 - 200.00

**95 MIGNON GERMAN REGULATOR WALL CLOCK**

A wood cased wall clock with metal face and pendulum. Plaque on the inside reads "Mignon. Made in Germany"

Size: 31 x 14 x 7 in.

200.00 - 300.00

**96 MEIKO TRANSISTOR WALL CLOCK.**

Meiko 400 day transistor clock. A battery-operated wall clock with wooden case and pendulum. The clock has some loss and wear to the case and is in unknown working condition.

Size: 40 x 23 x 8.5 cm.

Provenance: collection of Bev & Victor Fortinski, Calgary AB (Old Courthouse Antiques, Hanna AB)  
40.00 - 50.00

**97 REGULATOR WALL CLOCK**

A hanging wall clock in a two-tone wood case. Brass borders the paper face, with brass pendulum.

Size: 45 x 17 x 8 in.

150.00 - 250.00

**LOT #****98 REGULATOR WALL CLOCK**

A wooden wall mount clock with inlaid tri-colour wood. Clock features metal face and swinging glass door.

Size: 28 x 17 x 5.5 in.

100.00 - 200.00

**99 FHS HERMLE WAG ON WALL CLOCK**

A FHS Hermle Wag on the Wall clock with intricate embossed repousse brass flora and basket design to the clocks border, pendulum and weights. The clock face features a glass cover and plastic dial. To the back of the movement the clock is marked FHS Germany 241-430 76 - 94 cm/66.0.

Size: 18.5 x 14 x 5.5 clock case - 38 in. pendulum.

Provenance: collection of Bev & Victor Fortinski, Calgary AB (Old Courthouse Antiques, Hanna AB)  
200.00 - 300.00

**100 DUTCH REGULATOR WALL CLOCK**

A wooden wall mounted regulator clock with tin accents, a painted wooden face, and brass coated weights.

Size: 58 x 18 x 9 in.

300.00 - 500.00

**101 REGULATOR WALL CLOCK**

A carved wooden wall mount regulator clock with porcelain face plate and brass/wood pendulum.

Pendulum top hook damaged.

Size: 48 x 16 x 7 in.

150.00 - 250.00



## The Traditional Sale (Session One) 2024-10-18-2024-10-28

**LOT #****102 REGULATOR WALL CLOCK**

A wooden bodied wall mounted clock with brass and wood pendulum, metal face, and small access hatch to top.

Size: 30 x 13 x 7 in.

200.00 - 300.00

**103 WALL PAINTED FRONT CLOCK**

Pendulum front clock with painted glass design. The mantle clock case features wood pillars and two hinged glass doors; adapted to be hung. One door has a painting of an estate signed; W.H.Dodd SC. The dial is made of metal with a brass pendulum.

Height: 22 in.

Provenance: collection of Bev & Victor Fortinski, Calgary AB (Old Courthouse Antiques, Hanna AB)

80.00 - 100.00

**104 JUNGHANS WALL CLOCK**

Junghans wall clock with wood case and chrome glass cover. The clock has the Junghans logo at the center of the dial, with a small loss near the '6'.

Size: 13.5 x 13.5 x 2.5 in.

Provenance: collection of Bev & Victor Fortinski, Calgary AB (Old Courthouse Antiques, Hanna AB)

60.00 - 80.00

**105 BURL REGULATOR WALL CLOCK**

A burlled hanging wall clock with mirrored rear panel, painted metal face, and brass pendulum.

Size: 36 x 14 x 6 in.

150.00 - 250.00

**LOT #****106 PEQUEGNAT "CANADIAN TIME" WALL CLOCK**

An oak cased wall clock, having a white painted face with Roman numeral dial, made by the Arthur Pequegnat Clock Company, 1910s.

Size: 37 x 18 x 6 in.

400.00 - 600.00

**107 ARTHUR PEQUEGNAT REGULATOR WALL CLOCK**

An wooden wall mount clock made by Arthur Pequegnat. Clock features metal face and swinging wood/glass door. Face reads "The Arthur Pequegnat Clock Co. Canada"

Size: 27 x 16 x 5 in.

150.00 - 250.00

**108 GILBERT REGULATOR WALL CLOCK**

A wooden wall mount clock made by W.L Gilbert Clock Co. Clock features painted metal face and swinging glass door. Glass retention hooks and hinge are damaged.

Size: 28 x 18 x 5 in.

100.00 - 200.00

**109 FRENCH COMTOIS WALL CLOCK**

A comtoise morbier clock. The clock features a floral repousse brass border, cast iron weights, winding key and brass harp pendulum. The enamel dial reads Bruneaud Lamy Argenton. The clock has iron wall supports as well as a Dutch purchase certificate.

200.00 - 300.00

**110 BLACK FOREST CUCKOO CLOCK**

A wooden Black Forest Cuckoo Clock made in Germany. Clock features carved rabbit, bird, and deer to front, along with leaf-shaped pendulum, and pinecone weights.

Size: 19 x 12 x 9 in.

150.00 - 300.00





## The Traditional Sale (Session One) 2024-10-18-2024-10-28

## LOT #

**111 REGULATOR WALL CLOCK**

An oak 8-day regulator wall clock.  
Stamped "Emil Jensen" to rear.  
Height: 42 in.  
300.00 - 500.00

**112 REGULATOR WALL CLOCK**

A wall mount regulator wall clock with twin-door design, gold and silver tin face, and brass pendulum.  
Size: 37 x 15 x 7.5 in.  
200.00 - 400.00

**113 POSTMAN WALL CLOCK**

Wood postman wall clock with brass pendulum and pine cone weights. Wag on the wall clock. The clock face is missing a glass cover and has a reverse painted dial.  
Size: 11 x 11 x 7 in.



Provenance: collection of Bev & Victor Fortinski, Calgary AB (Old Courthouse Antiques, Hanna AB)  
160.00 - 250.00

**114 POSTMAN WALL CLOCK**

Wood postman wall clock with brass pendulum and two pine cone weights, one of which is slightly larger. Wag on the wall clock. The clock face has a brass and glass cover with a painted wood dial. The wooden case has wear to edges, with loss to lacquer surface. The clock is missing a clasp for the glass cover.  
Size: 11 x 11 x 7 in.



Provenance: collection of Bev & Victor Fortinski, Calgary AB (Old Courthouse Antiques, Hanna AB)  
80.00 - 120.00

## LOT #

**115 PATRICK, CARTER, & WILKINS CO. ELECTRIC CALL BELL**

An eight-room electric call bell manufactured by Patrick, Carter & Wilkins Co. Bell features a hinged glass and wooden window to the front.  
Size: 15 x 8 x 4 in.  
60.00 - 100.00

**116 PATRICK, CARTER, & WILKINS CO. ELECTRIC CALL BELL**

A four-room electric call bell manufactured by Patrick, Carter & Wilkins Co. Bell features a hinged glass and wooden window to the front and small plunger to the base.  
Size: 10 x 5 x 4 in.  
50.00 - 80.00

**117 ELECTRIC FARM BELL**

A hanging electric farm bell. Hollow with a hinged lid, lantern hanging hardware to top.  
Size: 9.5 x 5 x 5 in.  
50.00 - 80.00

**118 LIBERTY WALL MOUNTED BELL**

A full-metal wall mounted bell manufactured by liberty.  
Size: 8 x 5 x 1.5 in.  
40.00 - 60.00

**119 STANDARD ELECTRIC BELL**

A wall-mounted, electric brass bell. Features plaque reading "The Standard Electric Time Co. Cat. No. 281-J" and dated to rear "Aug 1964".  
Size: 5 x 5 x 4 in.  
50.00 - 80.00



## The Traditional Sale (Session One) 2024-10-18-2024-10-28

## LOT #

**120 WWII ASTRO COMPASS MK2**

Housed in its original wooden box with instructions for use.

Box size: 6.5 x 10.5 x 5.5 in.

100.00 - 200.00

**121 KEUFFEL & ESSER CO. DRAFTING PANTOGRAPH**

Well designed metal mechanism housed in the original box.

100.00 - 200.00

**122 LEOPOLD & STEVENS SEXTANT**

Made by Leopold & Stevens of Portland, Oregon Maritime Commission Sextant, Mfg. Aug. 29, 1945. Serial number #40662. In original wooden case.

500.00 - 700.00

**123 ANTIQUE WRITING BOX/TRAVEL DESK**

A wooden hinged box with lift top, pen and ink compartments, envelope slots and pull out drawer.

Size: 4 x 10.5 x 8.5 in.



Provenance: from the family of Roland Gissing

100.00 - 200.00

**124 WILLCOX & GIBBS AUTOMATIC SILENT SEWING MACHINE**

Table stamped, "Willcox & Gibbs Sewing Machine Co. New York - London - Paris" with patent dates to 1871. Painted and stenciled surface. Retained in original portable storage case with original catalogue.

100.00 - 200.00



## LOT #

**125 STELLA ACOUSTIC GUITAR**

A 1940s Harmony Made Stella guitar.

150.00 - 250.00

**126 VINTAGE METAL BREAD MAKER**

No. 8 Universal Bread Maker Dough Mixer. Made by Landers Frary & Clark.

80.00 - 120.00

**127 HAND CRANK ICE CREAM MAKER**

Wooden bucket with metal banding and handle. Crank apparatus stamped GEM, North Bros. Mfg.

100.00 - 200.00

**128 WOOD CASH REGISTER**

Rectangular English cash register, with lock and drawer with bell. The drawer has instructions to the underneath drawer hinge. The lock is marked: English Made J.E.A.S 2232/12 Pat Lever

Missing key with wear and paint damage.

Size: 7 x 9 x 17



Provenance: collection of Bev & Victor Fortinski, Calgary AB (Old Courthouse Antiques, Hanna AB)

60.00 - 80.00

**129 WOOD AND BRASS COAL SCUTTLE**

A wooden and brass coal scuttle with removable metal scoop. Label to base reading "Solomon Bros. Aldershot. Date: 18/12/14"

Size: 13 x 12.5 x 16 in.

200.00 - 300.00



## The Traditional Sale (Session One) 2024-10-18-2024-10-28

## LOT #

**130 ANTIQUE COPPER COAL SCUTTLE**

Decorative copper coal scuttle with double brass handles.

Size: 16 x 21 x 12 in.

80.00 - 120.00

**131 ALUMINUM COAL SCUTTLE**

Single handle coal scuttle with coal and shovel.

100.00 - 200.00

**132 DUCK DECOYS, EARLY 20th CENTURY (2)**

Two early Canadian duck decoys, each with inset glass eyes and weathered paint. The larger marked 'AL8' and '22-2' to the underside, the smaller with leaded weight. Size: 6.25 x 18 x 7.25 in. / 6.5 x 13.75 x 6 in.

Provenance: Estate of the artist Stanford Perrot, Bragg Creek, AB (sold by Hall's Auction Services in March 2002).

300.00 - 400.00

**133 LEATHER ENGLISH SADDLE SET**

Leather English saddle set. The saddle includes: a saddle bag, rope cinch, and horse blanket. The saddle features brass rivets and loops, with stirrups marked: Never Rust Made in England. The saddle bag has nickel buckles and rivets. A rope cinch saddle attachment with nickel buckles marked JJH. The saddle set is completed with a colorfully patterned horse blanket. All items have light wear from use.

Saddle Size: 36 x 25 in.

120.00 - 160.00



## LOT #

**134 VINTAGE ROY ROGERS COWBOY BOOTS**

Pair of 1940s-1950s leather cowboy boots with tooled decoration.

Size: 7 (approximate)

100.00 - 200.00

**135 VINTAGE BENTWOOD SNOWSHOES**

Sinew decking with rawhide strapping.

Manufactured by the Bastien Brothers.

Length: 36 in.

100.00 - 200.00

**136 VINTAGE BENTWOOD SNOWSHOES**

Sinew decking with rawhide strapping.

Manufactured by the Bastien Brothers.

Length: 38 in.

100.00 - 200.00

**137 VINTAGE BENTWOOD SNOWSHOES**

Sinew decking with rawhide strapping.

Length: 42 in.

100.00 - 200.00

**138 VINTAGE LACROSSE STICKS (4)**

A group of four lacrosse sticks including one field lacrosse stick.

Length: 42 in. (average)

150.00 - 250.00

**139 NATIVE AMERICAN RIB-BONE REPLICA BOW**

The double rib-bone bow decorated with painted rawhide grip, turkey feathers, and accompanied with two feathered arrows.

Bow: 33 in. long

120.00 - 180.00



## The Traditional Sale (Session One) 2024-10-18-2024-10-28

## LOT #

**140 NATIVE AMERICAN REPLICA BOW & BEADED QUIVER**

The fringed hide quiver extensively decorated with seed bead panel contains three feathered arrows, and the wood bow has a hide grip, bead and horsehair drop.

Bow: 48 in. long

Quiver: 22 in. long (excluding fringe)

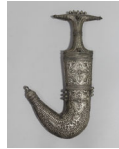
150.00 - 250.00

**141 JAMBIYA DAGGER**

Yemen design; double edge curved dagger, with wood wrapped silver sheath. The dagger features a T-shaped hilt with pyramid and pebble accents, the front of the sheath and the daggers hilt feature an ornate pattern.

Size: 13 x 8 in.

200.00 - 300.00

**142 AFRICAN TUAREG DAGGER PAIR**

The daggers feature a red leather and snakeskin grip and sheath. The daggers have a double-sided metal blade; the smaller dagger has a diamond design along the blade. Both of the daggers have an exposed metal pommel.

Size: 21 x 3.5 in. / 12 x 4 in.

80.00 - 120.00

**143 INDIGENOUS MOCCASINS (3)**

Early 20th century moccasin collection including one pair of hide moccasin with beaded decoration, one pair of hide and canvas with beaded decoration and a high top pair of hide and canvas.

100.00 - 200.00



## LOT #

**144 INDIGENOUS GAUNTLET AND MOCASSIN (2)**

Lot comprised of a pair of tanned hide with beaver fur trim and beaded decoration and a pair of hide and fur moccasins with beaded decoration.

100.00 - 200.00

**145 18th CENTURY ATLAS**

A coloured image book of maps featuring "The World on Mercator's Projection" and over 120 individual country, province and state full page maps. With index at the rear including 250,000 global locations. Map copyrights from 1897-1902.

Size: 12 x 9.5 x 2.5 in.

100.00 - 200.00

**146 ASPREY REFERENCE LIBRARY BOOK SET**

Set of eight miniature hard back books printed by Asprey & Co.Ltd, New Bond Street, London, 1925. Contained to a fitted wooden trough. The collection is comprised of Spanish and English Dictionary, English Quotations, Classics and Mythology, Encyclopedia, Gazetteer, Atlas, French and English Dictionary and English Dictionary.

Display Size: 7.5 x 9 x 7.5 in.

200.00 - 300.00

**147 ENGLISH BRASS NAME PLATES (2)**

Two brass plates for English Electric Co. Ltd., London. Both mounted to wooden plaques.

100.00 - 200.00

**148 MINIATURE AUTO SEAT COVER SALESMAN SAMPLE**

1960s "Good Car Keeping Auto Volland" salesman sample automotive car seat upholstery display.

Size: 11.5 x 22 x 13 in.

200.00 - 300.00





## The Traditional Sale (Session One) 2024-10-18-2024-10-28

## LOT #

**149 SOUVENIR SPOON COLLECTION & DISPLAY**

175 Count, in wooden framed display case.

Case Size: 36 x 36 x 3.5 in.

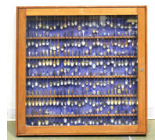
100.00 - 200.00

**150 SOUVENIR SPOON COLLECTION & DISPLAY**

192 Count, in wooden framed display case.

Case Size: 36 x 36 x 3.5 in.

100.00 - 200.00

**151 1867-1967 CONFEDERATION COIN COLLECTION**

Mounted coin and stamp collection including pre-confederation tokens, 1967 centennial coins, provincial confederation quarters, four postage stamps, Nunavut Toonie and 125th anniversary of the confederation Loonie. Mounted to an oval matte with maple leaf and beaver decoration. In a wooden frame under glass.

Frame size: 22 x 18 in.

300.00 - 500.00

**152 CANADIAN CURRENCY SHEET**

Canadian \$1 currency legal tender sheet of 40. Uncirculated and uncut.

150.00 - 250.00

**153 CANADIAN CURRENCY SHEET**

Canadian \$1 currency legal tender sheet of 40. Uncirculated and uncut.

150.00 - 250.00

**154 FRENCH BRASS WALL BAROMETER**

Brass wall barometer with applique of shield and trumpet. The barometer dial reads: 'A Paris de, Demichel' in small print, and 'barometre de precision' on banner.

Size: 8.5 x 9.5 in.



Provenance: collection of Bev & Victor Fortinski, Calgary AB (Old Courthouse

## LOT #

Antiques, Hanna AB)

100.00 - 150.00

**155 WILSON WALL BAROMETER**

Wilson forecast barometer and thermometer on wooden wall display. The banjo barometer style wooden case features shield crest relief carving and a secure shadow box for the thermometer. The back of the case is marked with the Wilson logo, 5016. The Wilson forecast barometer has the registration number 710284 with a 5 inch diameter, the chrome frame is slightly corroded.

Size: 24 x 8 x 3 in.



Provenance: collection of Bev & Victor Fortinski, Calgary AB (Old Courthouse Antiques, Hanna AB)

150.00 - 250.00

**156 COMITTI OF LONDON BANJO BAROMETER**

Comitti of London wooden banjo barometer. The banjo case has an etched rounded design with brass barometer attached; the back is marked 398. The barometer has a cracked glass face, and is marked J Lizars LTD Comitti of London to the dial.

Size: 16.75 x 5.5 in.



Provenance: collection of Bev & Victor Fortinski, Calgary AB (Old Courthouse Antiques, Hanna AB)

100.00 - 150.00

**157 GERMAN WALL BAROMETER**

Wood wall barometer and thermometer. The wood case features carved leaf scrolling and holds a R C thermometer, and a barometer. The brass barometer has thick glass and is marked Gebr Mittelstrass, Magdeburg Hoflied, S. Majestat. D kaisers. Small repair to right scroll leaf.

Size: 18 x 9 in.



Provenance: collection of Bev & Victor Fortinski, Calgary AB (Old Courthouse Antiques, Hanna AB)

100.00 - 150.00

## The Traditional Sale (Session One) 2024-10-18-2024-10-28

## LOT #

**158 DANISH WALL BAROMETER**

Wood wall barometer and thermometer. The wood case features carved leaf and flower scrolling and holds a R C thermometer, and a barometer. The brass barometer has thick glass and reads Foranderligt.

Size: 19.5 x 10 in.

Provenance: collection of Bev & Victor Fortinski, Calgary AB (Old Courthouse Antiques, Hanna AB)  
100.00 - 150.00

**159 WOOD WALL BAROMETER**

Wood wall barometer and thermometer with leaf scrolling. Features a R.C. enameled thermometer and brass barometer. The barometer has a glass cover and paper dial. With loss and a split to the right side.

Size: 18 x 9.5 in.

Provenance: collection of Bev & Victor Fortinski, Calgary AB (Old Courthouse Antiques, Hanna AB)  
80.00 - 120.00

**160 FRENCH WALL BAROMETER**

Wood wall barometer and thermometer. The wood case features carved leaf and flower scroll with enameled thermometer. The brass barometer has a thick glass face with French dial.

Size: 25 x 10 in.

Provenance: collection of Bev & Victor Fortinski, Calgary AB (Old Courthouse Antiques, Hanna AB)  
100.00 - 200.00



## LOT #

**161 ROUND BAROMETER**

Vintage round barometer in wooden case. The brass barometer dial reads: made in Western Germany.  
Size: 4 in. diameter

Provenance: collection of Bev & Victor Fortinski, Calgary AB (Old Courthouse Antiques, Hanna AB)  
60.00 - 80.00

**162 BIRKS AND SONS WALL BAROMETER**

Henry Birks and Sons wall barometer and thermometer. Wood in the banjo style case; with inlaid scroll and shadow box for thermometer. The brass barometer features thick glass with a dial marked Henry Birks & Sons Limited.  
Size: 22 x 8 in.

Provenance: collection of Bev & Victor Fortinski, Calgary AB (Old Courthouse Antiques, Hanna AB)  
160.00 - 250.00

**163 LACQUERED BANJO WALL BAROMETER**

Lacquered banjo wall case with barometer and thermometer. Light scratch to the left side of the case the back of the case is marked 503. The barometer and thermometer have a plastic cover and Dutch dial details.  
Size: 19 x 6 in.

Provenance: collection of Bev & Victor Fortinski, Calgary AB (Old Courthouse Antiques, Hanna AB)  
80.00 - 120.00



## The Traditional Sale (Session One) 2024-10-18-2024-10-28

**LOT #****164 WALL BAROMETER**

Wood wall barometer with geometric design. The barometer features a glass cover and enameled dial.

Size: 9.5 x 9.5 in.



Provenance: collection of Bev & Victor Fortinski, Calgary AB (Old Courthouse Antiques, Hanna AB)  
100.00 - 150.00

**165 ENGLISH BANJO WALL BAROMETER**

Wood wall barometer and thermometer. In the banjo style case; with chrome barometer and a shadow box for thermometer. The chrome barometer features thick glass with a dial marked Made in England. The glass on the shadow box has a small crack.

Size: 23 x 8 in.



Provenance: collection of Bev & Victor Fortinski, Calgary AB (Old Courthouse Antiques, Hanna AB)  
80.00 - 120.00

**166 GERMAN WALL WEATHER STATION**

A wall station for monitoring temperature, pressure, and humidity. Features a thermometer, barometer and hygrometer. The hygrometer and barometer are marked West Germany with glass cases. Light wear to case, with scratches to corners.

Size: 18 x 5 in.



Provenance: collection of Bev & Victor Fortinski, Calgary AB (Old Courthouse Antiques, Hanna AB)  
60.00 - 80.00

**LOT #****167 TOLEDO HANGING SCALE**

Model No. 2110. Serial No. 90323

A hanging scale with a 15 kg weight limit, with metal plate.

Size: 18 x 15 x 4 in.

80.00 - 120.00

**168 TOLEDO HANGING SCALE**

Model No. 2110. Serial No. 25565.

A hanging scale with a 30 lbs weight limit, with metal basket.

Size: 18 x 15 x 4 in.

80.00 - 120.00

**169 KILOTECH TABLE SCALE**

Model AM 2501.

Scale measures in both Kg and Lbs.

Size: 11 x 9 x 10 in.

80.00 - 120.00

**170 TRINER PRECISION POSTAGE SCALE**

A metal postage scale manufactured by Triner in the USA. Small hatch to rear containing regulating screw.

Size: 6 x 5 x 6 in.

50.00 - 80.00

**171 PLASTIC MINIATURE SCALES (2)**

A grouping of two miniature scales including:

Petite Postage Scale. Dated 1968, Model PC-1. Made in the USA.

Weight Watchers International Official Scale.

Size: 4 x 2 x 4 in.

50.00 - 80.00



## The Traditional Sale (Session One) 2024-10-18-2024-10-28

**LOT #****172 TRINER AIR MAIL ACCURACY SCALE (2)**

Two Triner Air Mail Accuracy Scales. Full painted metal construction, one with emblem to the back reading "Sold and Serviced by The Scale Show. 52 54 Walton St. Toronto." Manufactured by Triner Scale & MFG. Co. Chicago, ILL.

Size: 5 x 10 x 5 in.  
80.00 - 120.00

**173 EXATA TABLE SCALE**

A metal bodied Exata scale manufactured in Germany. Scale features two sliding weights, one for kg/lb, the other for gm/oz.

Size: 4 x 14 x 8 in.  
80.00 - 120.00

**174 CENCO SCIENTIFIC SCALE**

A scientific scale manufactured by Central Scientific Co. Chicago. This scale features three sliding weights and is precise to the gram.

Size: 6 x 13 x 5 in.  
80.00 - 120.00

**175 TRINER TABLE SCALE**

A metal bodied table scale manufactured by Triner. Model No. AA-2. Scale features a sliding weight and postage guide to the front.

Size: 7 x 16 x 7 in.  
80.00 - 120.00

**176 FRANK ELECTRIC EXACT WEIGHT SCALE**

An Exact Weight Scale Co. 5 lbs scale. Serial No. 372727. Scale features full metal design, with small plastic "Over/Under" window.

Size: 16 x 13 x 6 in.  
80.00 - 120.00

**LOT #****177 PARNALL AND SONS SCALE**

A large scale marked "Parnall & Sons. Bristol" Serial No. 9253. Scale features a large porcelain plate stamped "John White & Son. Auchtermuchty".

Size: 8 x 23 x 7 in.  
100.00 - 200.00

**178 UKWEZEN STORE SCALE**

A painted metal Ukwezen store scale, moden No. 127B. Scale comes with large brass spouted bucket.

Size: 8 x 19 x 7 in.  
100.00 - 150.00

**179 A. GALLENKAMP BALANCE SCALE IN DISPLAY CASE**

An A. Gallenkamp & Co. balance scale presented in a wood and glass display case. Scale is mounted to a wooden base with brass tree and metal plates. Scale is accompanied by a set of weights (with some missing).

Case Size: 15.5 x 17.5 x 9.5 in.  
100.00 - 200.00

**180 H.L. BECKER BALANCE SCALE IN CASE**

A H.L. Becker Fills and Co. balance scale presented in a wood and glass display case. Scale is mounted to a wooden base with metal tree and plates. Scale is accompanied by a set of weights (with some missing).

Case Size: 18.5 x 18 x 8 in.  
100.00 - 150.00

**181 ANDRE ARBUS DINING TABLE AND CHAIRS (9)**

Andre Arbus for William Switzer, a mid 20th century ebony and walnut dining table. The top supported by large C-scroll brackets legs, joined by a cylindrical stretcher with chrome rings and fitted with chromed metal feet. With two leaves and a set of eight Lucien Rollin arm chairs with upholstered seats and backs.



## The Traditional Sale (Session One) 2024-10-18-2024-10-28

**LOT #**

Size: 30 x 96 x 48 in. Leaves measure 20 in. each.  
4,000.00 - 6,000.00

**182 ANDRE ARBUS FOR WILLIAM SWITZER CONSOLE TABLE**

Andre Arbus for William Switzer, a mid 20th century ebony and walnut console table. The top supported by large C-scroll brackets legs, joined by a cylindrical stretcher with chrome rings and fitted with chromed metal feet. With slight loss to veneer finish.

Size: 31.5 x 74 x 22 in.  
1,000.00 - 1,500.00

**183 CARVED ANGLO-INDIAN SERVER**

Elaborately carved and pierced cabinet with two front doors and interior wooden shelving. Supported by bun feet.

Size: 41 x 49 x 16 in.  
300.00 - 500.00

**184 WOODEN TUB CHAIR**

Spindle back and with leather seat.

Size: 28 x 22 x 20 in.  
80.00 - 120.00

**185 CARVED ROSEWOOD TABLE AND CHAIRS (7)**

Late 19th century Anglo-Indian table set with circular table featuring carved apron over a quatre-form base with bun feet and casters. Includes a set of six chairs with elaborately carved backs featuring a florette design and acorn finials, padded seats, stylized lion's head carving to the legs and paw feet.

Size: 31 x 60 x 60 in.  
600.00 - 800.00

**LOT #****186 HITCHCOCK STYLE SIDE TABLE PAIR (2)**

A pair of black, single drawer side tables with glass preserve top and base. Some minor losses noted. Marked "Powell" to rear.

Size: 30 x 30 x 16 in.  
150.00 - 250.00

**187 BRASS FLOOR LAMP**

Brass pole lamp with upturned white glass globe.

Size: 65 x 15 x 15 in.  
100.00 - 200.00

**188 ARTS & CRAFTS UMBRELLA STAND**

In the style of Charles Rohlf an octagonal stand with carved base and wooden beads.

Likely chestnut wood.  
Size: 29 x 20 x 20 in.  
100.00 - 200.00

**189 WOODEN OPEN BOOKSHELF**

1970s Thomasville Furniture open bookcase with five serpentine shelves supported by turn post columns over a stepped base.

Size: 80 x 47 x 16 in.  
300.00 - 400.00

**190 CLAIRTONE STEREO CABINET**

Vintage stereo console cabinet with AM/FM radio and turntable.

Size: 30 x 62 x 20 in.  
100.00 - 200.00





## The Traditional Sale (Session One) 2024-10-18-2024-10-28

## LOT #

**191 GRUNDIG KONZERTSCHRANK M 72 STEREO CABINET**

A Grundig Konzertschrank M 72 stereo cabinet. Cabinet features a wooden body with split compartments. One with stereo and dynamic audio controls, the other with record player and built in lighting.

Size: 23 x 48 x 15 in.

200.00 - 300.00

**192 GRUNDIG MAJESTIC STEREO CABINET**

A Grundig Majestic stereo cabinet. Cabinet features a wooden body with split compartments. One with stereo and dynamic audio controls, the other with a record player. Cabinet stands on wooden legs with brass feet.

Size: 30 x 37 x 15 in.

200.00 - 300.00

**193 PHILCO RADIO CABINET**

1930s Philco lowboy console radio.

Size: 40 x 27 x 14.5 in.

100.00 - 200.00

**194 ANTIQUE MAHOGANY WINE CHEST**

With hinged top and carved exterior.

Size: 19.5 x 30.5 x 19.5 in.

100.00 - 200.00

**195 17th CENTURY SCANDINAVIAN IMMIGRANT CHEST**

Dome top, hinged chest decorated in black iron including scrollwork, black iron banding, iron side handles and initialed "IAESE" and dated 1622. Includes large metal key.

Size: 26 x 48.5 x 24 in.

800.00 - 1,200.00



## LOT #

**196 PRESSBACK SPINDLE CHAIRS (4)**

Four pressed back spindle chairs, two with rush seating.

Size: 40 x 16 x 19 in.

200.00 - 300.00

**197 GATE LEG DINING TABLE**

Oak table with three leaves and stick and ball gate leg.

Size: 28 x 45 x 40 in. Leaves 10 in.

300.00 - 400.00

**198 HANGING WALL CABINET**

A wooden hanging wall cabinet featuring swinging glass door and exposed shelves to the sides. Is freestanding, but features hanging hardware to rear.

Size: 24 x 20 x 9 in.

100.00 - 200.00

**199 GRUNDIG MAJESTIC STEREO CONSOLE S0**

A Grundig Majestic S0 stereo console. Cabinet features a glossy wood body with front-facing speakers, and vertically split compartments. One contains stereo and tuning dials, the other, a record player.

Size: 24 x 43 x 14 in.

200.00 - 300.00

**200 CHERRYWOOD CONSOLE CABINET**

Lighted cherry cabinet with faux marble top, side glass doors, arched glass front panels and mirrored back. With interior glass shelving.

Size: 36 x 28 x 15 in.

200.00 - 300.00



## The Traditional Sale (Session One) 2024-10-18-2024-10-28

**LOT #****201 VICTORIAN DRESSER WITH MIRROR**

Bird's Eye maple dresser with oval mirror supported by scroll arm brackets and two half size drawers over one full length drawer. Cabriole legs with casters.

Size: 59 x 36 x 20 in.

200.00 - 300.00

**202 19th CENTURY MAHOGANY BUFFET**

Spindle back gallery, single drawer over double cupboard doors with relief carvings to the front and flanked by barley twist posts. Supported by bun feet.

Size: 42.5 x 36.5 x 20 in.

150.00 - 250.00

**203 GRAND-DAUGHTER CLOCK**

Replaced with battery operated movement, comes with original brass internals. Made in England.

Size: 56 x 11.5 x 9 in.

150.00 - 250.00

**204 MARTHA WASHINGTON SEWING CABINET**

Mahogany with three graduated drawers flanked by lift top side cabinets. Condition noted, missing one knob.

Size: 28 x 28 x 14 in.

60.00 - 80.00

**205 SLIGH LEATHER TOP WRITING DESK AND CHAIR (2)**

A curved back, walnut writing desk. Features leather top, brass legs and hardware, and is stamped "Sligh Furniture. Holland, Michigan" to the inside of the central drawer. The table is paired with a white, upholstered, caned back chair.

Size: 49 x 42.5 x 21.5 in.

200.00 - 300.00

**LOT #****206 BOSHART CEDAR CHEST**

Cedar lined chest with hinged top and lower drawer. Bearing paper label.

Size: 25 x 47 x 20 in.

100.00 - 200.00

**207 ASH WOODEN BENCH**

Late 19th century solid wood foyer bench.

Size: 21 x 50 x 11 in.

100.00 - 200.00

**208 ASIAN ALTAR TABLE**

Rectangular shaped top above three drawers, with original brass handles, raised on square scroll legs. Bearing paper label.

Size: 31 x 42 x 14 in.

100.00 - 200.00

**209 SLIGH MAHOGANY KIDNEY SHAPE DESK**

Kneehole desk with inlaid leather writing surface. Central drawer with four drawers to each side and original brass hardware.

Size: 29.5 x 54 x 27 in.

300.00 - 500.00

**210 VICTORIAN CHILD'S ROCKING CHAIR**

Rosewood rocking chair with pink velvet upholstery.

Size: 34 x 18 x 27 in.

100.00 - 200.00

**211 WESTINGHOUSE RADIO CLOCK**

1931 Westinghouse Columaire Art Deco Skyscraper Clock Radio WR-8. Built-in Westinghouse electric clock and dials to the side. Takes only one square foot of floor space.

Size: 54 x 13 x 12 in.

100.00 - 200.00



## The Traditional Sale (Session One) 2024-10-18-2024-10-28

**LOT #****212 SINGER SEWING MACHINE TREADLE BASE**

Black iron treadle base converted to a table.

Large split to top.

Size: 29 x 30 x 12 in.

100.00 - 200.00

**213 QUARTER CUT OAK ROCKING CHAIR**

Armchair with slat back.

Size: 31 x 22 x 31 in.

80.00 - 120.00

**214 OAK SIDE TABLE**

Two drawers with open side shelving. Barley twist legs joined by decorative stretcher.

Size: 30 x 40 x 25 in.

150.00 - 250.00

**215 OAK OFFICE DESK**

1930s oak pedestal desk with four side drawers to one side and one drawer to the other side over hidden panel cupboard on the right side.

Size: 30 x 52 x 30 in.

300.00 - 400.00

**216 STICKLEY SIGNED SIDE CHAIR**

L & J.G. Stickley solid oak side chair with slat back and leather seat. With paper label to the underside and dated 1912-1917.

Size: 35 x 16.5 x 16 in.

250.00 - 400.00

**217 STICKLEY SIGNED ROCKING CHAIR**

Gustav Stickley solid oak with slat back and leather seat. Stamped to the underside and dated 1912-1918.

Size: 34 x 19 x 25 in.

300.00 - 500.00

**LOT #****218 RUSTIC PINE FARMHOUSE TABLE**

With drawer and turned legs.

Size: 29 x 48 x 33 in.

150.00 - 250.00

**219 POSSUM BELLY BAKERS TABLE**

Pine table with two flour bins and pull out kneading boards.

Size: 30.5 x 49.5 x 28 in.

150.00 - 250.00

**220 VICTORIAN FIRE SCREEN**

Mahogany framed with three fabric panels.

There are three retractable slides

upholstered in brown damask design fabric.

Size: 42 x 21 x 14

100.00 - 200.00

**221 EDWARDIAN DISPLAY CABINET**

Mahogany with inlaid decoration. Triple glass doors with wooden fretwork. The interior with fabric lined shelves and backing. Lower shelf supported by bobbin legs. Multiple spots of damage, glass has a small crack, some trim damage and cracks through the frame.

Size: 75 x 51 x 14.5 in.

300.00 - 500.00

**222 BURL WALNUT DISPLAY CABINET**

Double glass door display cabinet with interior wooden shelving. Resting on bun feet. Some loss noted.

Size: 72 x 43 x 13 in.

300.00 - 500.00



## The Traditional Sale (Session One) 2024-10-18-2024-10-28

---

LOT #**223 EASTLAKE STYLE VANITY DRESSER**

Eastlake walnut chest with rectangular tilt mirror and white marble over three burled walnut drawers with glass knobs.

Size: 78 x 38 x 18 in.

200.00 - 300.00

**224 SMITHS GRAND-DAUGHTER CLOCK**

Art deco two train heavy brass movement, sprung driven for tune and strike.

Manufactured by the Smiths English Clock Ltd. Missing trim to lower section of front. Model P30554.

Size: 52 x 11.5 x 7 in.

200.00 - 300.00

**225 DISPLAY CABINET**

Lighted cabinet with curved front, double glass panels with interior glass shelving.

Size: 70 x 23 x 18 in.

300.00 - 400.00

**226 GENTLEMANS VALET STAND**

Mahogany valet stand with two small drawers and coat hanger.

Size: 48 x 18 x 14 in.

100.00 - 200.00

**227 ANTIQUE OAK HALL BENCH**

With lift top seat, central mirror flanked by four brass coat hooks and umbrella slots in the arms.

Size: 69 x 25 x 12 in.

100.00 - 200.00



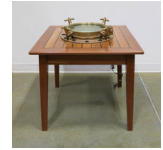
---

LOT #**228 CUSTOM PORT LIGHT TABLE**

1940s brass port light with 12 inch glass and T-bar handles built into a African ebony table. Stained glass water effect backlit by adjustable LED lighting.

Size: 29 x 30 x 30 in.

400.00 - 600.00

**229 DOUBLE PEDESTAL DESK**

A late 18th century double pedestal kneehole desk with inlaid decoration, several drawers including hidden drawer to the back and original brass hardware.

Size: 30 x 32.5 x 18.5 in.

200.00 - 300.00

**230 SERPENTINE CHEST OF DRAWERS**

19th century Dutch serpentine chest, moulded edge, fitted with three drawers with shaped fronts and brass handle pulls.

Flanked by shaped uprights and paneled sides, raised on cabriole supports terminating in ball and claw feet joined by a decorative stretcher.

Size: 36 x 36 x 18 in.

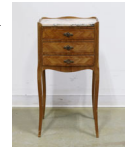
300.00 - 500.00

**231 MARBLE TOP ACCENT TABLE**

Louis XV style three drawer side table with marquetry decoration, marble top and supported by slender cabriole legs.

Size: 29.5 x 15 x 12 in.

150.00 - 250.00

**232 CONTEMPORARY SPECIMEN TABLE**

Hinged and glass top display table with lined interior.

Size: 26 x 26 x 18 in.

150.00 - 300.00



## The Traditional Sale (Session One) 2024-10-18-2024-10-28

**LOT #****233 SINGER SEWING MACHINE IN CABINET**

Cast iron treadle base and oak cased cabinet with carved side drawers.

Size: 39 x 50 x 18 in.

150.00 - 250.00

**234 FLOOR PRIVACY SCREEN**

Four panel, wooden framed with fabric screening. Damage to base of one screen.

Size: 66 x 75 x 1 in.

100.00 - 200.00

**235 STONE-TOPPED PEDESTAL SHELVING UNITS (2)**

A pair of tall, wooden shelving units with stone tops. Made in the USA as indicated by a sticker to the inside. Minor losses noted.

Size: 59 x 22 x 22 in.

200.00 - 300.00

**236 STONE-TOPPED PEDESTAL SHELVING UNITS (2)**

A pair of tall, wooden shelving units with stone tops. Made in the USA as indicated by a sticker to the inside. Minor losses noted.

Size: 59 x 22 x 22 in.

200.00 - 300.00

**237 GEORGE J LIPPERT LTD. CORNER DISPLAY CABINET**

1940s walnut corner cabinet. Broken arch pediment, tombstone door with applied fretwork, shelved interior over paneled door, shaped skirt on shaped feet.

Size: 71 x 23 x 14 in.

150.00 - 300.00

**LOT #****238 WESTINGHOUSE RADIO CLOCK**

1931 Westinghouse Columaire Art Deco Skyscraper Clock Radio WR-8. Built-in Westinghouse electric clock and dials to the side. Takes only one square foot of floor space.

Size: 60.5 x 15 x 12 in.

100.00 - 200.00

**239 WOODEN DISPLAY CABINET**

Wooden fretwork gallery over a glass door flanked by carved twin posts and supported by bun feet. "Miscellaneous Dance" to front of one shelf.

Size: 45 x 26 x 19 in.

150.00 - 250.00

**240 RCA VICTOR "The Montgomery" TV CABINET**

Wood veneer cabinet. 1950s television in enclosed cabinet. Model No. 21TC144.

Size: 40 x 27 x 25 in.

100.00 - 200.00

**241 MAJESTIC STEREO CABINET**

AM/FM radio and turntable. Lower storage space. Some conditions to the exterior cabinet.

Size: 35 x 40 x 18 in.

100.00 - 200.00

**242 FRENCH PROVINCIAL PARLOUR SUITE (3)**

Settee and two arms chairs, each with white brocade upholstery and carved wooden frames. Some stains and losses to wood.

Size: 32 x 49 x 26 in. and smaller

500.00 - 800.00





## The Traditional Sale (Session One) 2024-10-18-2024-10-28

**LOT #****243 FRENCH PROVINCIAL PARLOUR CHAIRS (4)**

Carved wooden frames with white brocade upholstery.

Size: 34 x 17 x 17 in.

200.00 - 300.00

**244 HEXAGONAL TILT-TOP TABLE**

A two-tone wooden tilt-top table. Table features carved legs and decorative column.

Tilt-lock mechanism has been removed.

Size: 29 x 29 x 25 in.

100.00 - 200.00

**245 ACCENT TABLE PAIR (2)**

A grouping of two wooden accent tables with inset glass tops. The larger one has four stow-away seats. Wear to base and tops noted.

Size: 20 x 40 x 40 in. and smaller.

200.00 - 300.00

**246 19th CENTURY SECRETARY DESK**

The fall front enclosing a fitted interior of pigeon holes and compartments, the base having four full length drawers with original brass hardware.

Size: 41.5 x 31.5 x 18 in.

200.00 - 400.00

**247 SHADOW BOX AUTUMNAL DISPLAY**

"Farmer's Wreath" by Thomas and Jemima Christie, Winchester, Ont., 1871. Framed wreath of dried florals, nuts, seeds and fruits. Some fruits have become unattached. Framed and on a display stand and artist plaque attached.

Size: 55 x 36 x 18 in.

120.00 - 250.00

**LOT #****248 VICTORIAN WOODEN EASEL**

Late 19th century foldable easel with spindle decoration.

Size: 58 x 22 x 26 in.

80.00 - 120.00

**249 BURL WALNUT DAVENPORT DESK**

Late 19th century with lift top inset tooled leather writing surface. Raised on bun feet supports, four side drawers on one side, four faux drawers on the opposite side (missing one knob) and upper compartment with inlay decoration.

Size: 34 x 22 x 22 in.

500.00 - 800.00

**250 BIRKS ITALIAN BAR CART**

With floral marquetry inlay, brass gallery and hardware. Three brass bottle ring holders on the lower level.

Size: 29 x 30 x 18 in.

200.00 - 300.00

**251 WOODEN LIFT TOP TABLE**

Hinged with lift top revealing storage area and metal base.

Size: 24.5 x 24 x 28 in.

200.00 - 300.00

**252 ART DECO METALCRAFT FLOOR LAMP**

Standing floor lamp with clock shaft and square upturned glass shade with leaf decoration.

Height: 66 in.

100.00 - 200.00



## The Traditional Sale (Session One) 2024-10-18-2024-10-28

## LOT #

**253 MAJESTIC CONSOLE RADIO**

1930s Floor model in a wooden case.

Model No. 662

Size: 39 x 24 x 12 in.

100.00 - 200.00

**254 SILVERSTONE STEREO CABINET**

A wooden stereo cabinet made by Silverstone. Catalogue No. 1066, Chassis No. 100.202. Cabinet features split, drop-down compartments for the stereo and record player, as well as front-facing speaker and storage compartment to lower half. Damage to fabric speaker cover noted.

Size: 34 x 35 x 18 in.

200.00 - 300.00

**255 ELECTROHOME TELEVISION**

Model No. T-128A, Serial No. 590447.

Manufactured by Dominion Electrohome Industries Ltd. In Kitchener, Canada. Minor loss to top right.

Size: 27 x 24 x 28 in.

100.00 - 200.00

**256 ANSCO STUDIO CAMERA**

On rolling base. With "Taylor-Hobson Cooke Portrait Anastigmat 15 Inch Series II F/4.5 NO. 123525" Lens

Size: 60 x 32 x 32 in.

400.00 - 600.00

**257 MAISON DE LA BONNE PRESSE, MAGIC LANTERN PROJECTOR**

Circa 1900. This projector features a black metal body and golden accents, with swinging doors to sides and back of case.

Attached is a Jean D'Arc No. 3 lens.

Manufactured at 5 Rue Bayard, Paris.

Size: 20 x 10 x 22 in.

200.00 - 400.00



## LOT #

**258 VINTAGE CHATILLON HANGING SCALE**

Chatillon Type 4200 antique mercantile scale. 30 lb. capacity. Made in NY, USA.

Recovered from Calgary Brewery.

Diameter: 11 in.

80.00 - 120.00

**259 GENERAL ELECTRIC REFRIGERATING MACHINE**

Manufactured by Canadian General Electric Co.

"Type: AK1-A16" "No. 97335"

"Refrigerator-Type-C.X. -50. Patented 1930. No. 10376.

Size: 57 x 24 x 23 in.

200.00 - 300.00

**260 RUSH SEAT CHAISE LOUNGE**

William and Mary style caned daybed with barley twist wooden frame.

Size: 36 x 63 x 21 in.

200.00 - 400.00

**261 VICTORIAN BUSTLE BENCH**

Late 19th century upholstered Victorian settee with fine carvings and supported by turned legs on castors.

Size: 36 x 31 x 22 in.

200.00 - 300.00

**262 VICTORIAN PARLOUR ARMCHAIR**

Walnut carved frame with light pink brocade upholstery with button tuft back and arms. Some slight loss to the upholstery.

Size: 45 x 27 x 24 in.

100.00 - 200.00



## The Traditional Sale (Session One) 2024-10-18-2024-10-28

**LOT #****263 NEEDLEPOINT ARMCHAIR**

A wooden armchair with needlepoint floral design to seat and back. Back features a young couple standing in a field. Wear to armrests and large stain to front corner noted.

Size: 35 x 25 x 24 in.

100.00 - 150.00

**264 NEEDLEPOINT FOOTSTOOL**

The stool has a marquetry wood base with floral needlepoint top on squat bun feet.

Size: 4 x 10.5 in.

Provenance: collection of Bev & Victor Fortinski, Calgary AB (Old Courthouse Antiques, Hanna AB)

150.00 - 250.00

**265 WOODEN AFRICAN STOOL**

A vintage African tribal carved accent or occasional table, with a solid base and top supported by three carved figures.

Size: 16.5 x 12 in.

100.00 - 200.00

**266 INLAID TILT TOP TABLE**

Late 19th century ebonized papier mache tilt table with abalone shell inlay and hand painted with a floral design.

Size: 38 x 20 x 20 in.

150.00 - 250.00

**267 CARVED ASIAN DRAGON CHAIR**

Elaborately carved ebonized wood dragon chair. Resting on cabriole legs. Likely the Meiji period (1868–1912).

Size: 29 x 25 x 19 in.

300.00 - 500.00

**LOT #****268 METAL TIERED DISPLAY TABLE**

Hollywood Regency style three octagonal tiered pierced table supported by paw feet.

Size: 28 x 11.5 x 11.5 in.

150.00 - 300.00

**269 BRASS AND GLASS SIDE TABLE**

Two tier occasional table/plant stand with glass table top framed by a carved brass border and lower shelf. Supported by curved legs with claw feet.

Size: 31 x 13 x 13 in.

200.00 - 300.00

**270 WOODEN TABLE WITH INSET GLASS**

A gold-painted wooden table with inset glass top.

Size: 26 x 24 x 24 in.

150.00 - 200.00

**271 SEVILLE STUDIOS STYLE OCCASIONAL TABLE**

1920s polished cast metal occasional table engraved with grape vines and art nouveau swags and with circular inset glass table top.

Size: 20 x 21 x 21 in.

150.00 - 250.00

**272 STEAMER TRUNK WARDROBE**

1920s gibraltarized deco design wardrobe trunk was produced by Hartmann Luggage. It has a cushion top with four drawers on one side and hangers for clothes on the other.

Size: 42 x 24 x 23 in.

300.00 - 500.00



## The Traditional Sale (Session One) 2024-10-18-2024-10-28

## LOT #

**273 HEXAGONAL GAMES TABLE**

A six-sided, green leather topped table with a carved pedestal base and brass feet. Two drawers are found on the sides of the table. Some losses noted to trim around top.

Size: 25 x 36 x 31 in.

200.00 - 300.00

**274 LEATHER INLAY SIDE TABLE PAIR (2)**

Single drawer to side, wooden with leather top. Splayed leg with brass paw feet.

Missing one foot cover.

Size: 28 x 28 x 28 in.

200.00 - 300.00

**275 STICKLEY "HARVEY ELLIS" COCKTAIL TABLE**

Mission Collection round oak table with Viking ship inlay motif on each leg that supports a fixed lower shelf. Some fine scratches to the top surface.

Size: 20.5 x 40 x 40 in.

600.00 - 900.00

**276 STICKLEY "HARVEY ELLIS" ACCENT TABLE**

Mission Collection oak table with shaped top and with Viking ship inlay motif on each leg joined by an "X" stretcher. Some fine scratches to the top surface.

Size: 25.5 x 24 x 24 in.

400.00 - 600.00

**277 GEORGIAN MAP/DOCUMENT CHEST**

19th century chest of drawers with five shallow, full length drawers, original brass hardware and supported by bracket feet.

Size: 32 x 31 x 18 in.

300.00 - 400.00



## LOT #

**278 GRAMPIAN CABINET GRAMOPHONE**

1930s cabinet gramophone by Grampian.

Mahogany case with central fretwork horn cover flanked by record cupboards either side. Chip noted to front.

Size: 33 x 28 x 20 in.

100.00 - 200.00

**279 BRUNCSWICK GRAMOPHONE CABINET**

A floor standing record cabinet made by The Brunswick-Balke Collender Co. of Canada Ltd. Cabinet features a hinged top to access the record player, as well as a shelving unit below. Dated 1917 to the arm.

Size: 44.5 x 20 x 21 in.

200.00 - 300.00

**280 ART DECO BOOK TABLE**

An oak octagonal top table with two lower shelves and cantled corners.

Size: 27 x 21.5 x 22 in.

200.00 - 300.00

**281 GRANDFATHER CLOCK**

A wooden grandfather clock with floral painted design to front. Clock mechanism features a gilt-gold body and painted metal face. Comes with harp pendulum and weights. Multiple spots of wear noted.

Size: 90 x 19 x 8 in.

200.00 - 400.00

**282 PEDESTAL TABLE**

A large glass pedestal table with cast plaster base. Minor losses noted to base.

Size: 30 x 60 x 60 in.

200.00 - 300.00



## The Traditional Sale (Session One) 2024-10-18-2024-10-28

## LOT #

**283 PATIO FURNITURE SET (3)**

Consists of two black metal chairs with strapped-rubber seat, spinning base, and white cushion. Table is metal with a stone top.

Size: 36 x 24 x 26 in. and smaller.

200.00 - 300.00

**284 PATIO FURNITURE SET (3)**

Consists of two black metal chairs with strapped-rubber seat, spinning base, and white cushion. Table is metal with a stone top.

Size: 36 x 24 x 26 in. and smaller.

200.00 - 300.00

**285 TREE TRUNK DISPLAY TABLE**

Live edge table with three tiered platforms and supported by tree trunks.

Size: 30 x 29 x 25 in.

100.00 - 200.00

**286 OAK OFFICE CHAIR**

An adjustable and swivel chair with leather seat and slat back.

Size: 39 x 24 x 22 in.

80.00 - 120.00

**287 RUSH SEAT CHAIR**

Step back chair with rush seating.

Size: 34 x 20 x 18 in.

60.00 - 80.00

**288 PINK UPHOLSTERED CHAIR**

A cushioned, pink upholstered chair with black base with gold inlay. Multiple stains to backrest and rear.

Size: 32 x 26 x 24 in.

100.00 - 150.00



## LOT #

**289 GILTWOOD GESSO UPHOLSTERED OPEN ARMCHAIR**

Upholstered back, seat and arms with brad nail trim and supported by a giltwood frame.

Size: 37 x 26 x 24 in.

100.00 - 200.00

**290 ANTIQUE NEEDLEPOINT FIRESCREEN**

Mahogany framed needlepoint on a carved and tripod base.

Art Size: 20 x 18 in.

Overall Size: 65 x 24 x 18 in.

100.00 - 200.00

**291 ANTIQUE SPINNING WHEEL WITH BONE INLAY**

A wooden spinning wheel with bone inlay.

Size: 24 x 25 x 14 in.

100.00 - 200.00

**292 EDISON EDIPHONE SHAVER CABINET**

Audio recording device in black finish metal cabinet. Serial No. 25283, Pat. April 27, 1915

Size: 35 x 18 x 17 in.

100.00 - 200.00

**293 EDISON EDIPHONE SHAVER CABINET**

Audio recording device in green finish metal cabinet. Serial No. 30546

Size: 35 x 18 x 18 in.

100.00 - 200.00





## The Traditional Sale (Session One) 2024-10-18-2024-10-28

## LOT #

**294 EDISON THE EXECUTIVE EDIPHONE**

Metal stand with black finish, Serial No. D 253423. Includes cylinders.

Size: 35 x 16 x 13 in.

100.00 - 200.00

**295 EDISON DICTAPHONE VOICEWRITER**

Early 20th century. The Dictaphone Type: X. Serial NO. 93099. On metal frame with castors.

Size: 33 x 18 x 12 in.

100.00 - 200.00

**296 EDISON EDIPHONE**

Metal stand with black finish on casters. Serial No. 233453. Includes cylinders.

Size: 34 x 17 x 14 in.

100.00 - 200.00

**297 NATIONAL SPECIALTY COFFEE MILL**

19th century National Specialty Manufacturing Company, Philadelphia double-wheeled cast iron coffee mill, retaining its original painted surface and decal decorations and hinged lid, embossed 'NATIONAL SPECIALTY M'F'G. CO. PHILADELPHIA, PA., U.S.A.' to each wheel. Drawer may not be original to the piece.

Size: 23 x 15 x 17 in.

300.00 - 500.00

**298 LISTER BALL BEARING CREAM SEPARATOR**

Hand-powered cream separator consisting of a primary unit with a four footed base; a cylindrical support; projecting shelf; and a support for the separator mechanism. The base and support are finished with a red-coloured enamel. Manufactured in England, Sold by Cockshutt Plow Co. Ltd.

Size: 38 x 16 x 28 in.

200.00 - 400.00



## LOT #

**299 WINCHARGER 1000 WATT GIANT WIND GENERATOR**

Circa 1930s. This portable wind generator was used to power radios in the 1930s. Lot includes generator, wooden blade, metal counterbalance, adjustable tripod stand, mounting plate, and advertising tail fin.

Generator Size: 29 x 15 x 12 in.

Rotor Diameter: 134 in.

200.00 - 400.00

**300 MURRAY SUPER TOT-ROD PEDAL CAR**

1950s pedal car equipped with read bucket seat and heavy gauge double tubular drop wedge frame. Original paint finish.

Size: 21 x 44 x 22 in.

100.00 - 200.00

**301 BLUE BOSS "PEDAL POWER" CAR**

Painted blue reproduction pedal car.

Size: 22 x 35 x 16 in.

200.00 - 300.00

**302 MID-CENTURY ROCKING HORSE**

1950s GMT Toys Ltd. metal framed rocking horse with hand painted wooden head.

Size: 13 x 27 x 13 in.

100.00 - 200.00

**303 NIAGARA CLOTHES MANGLER**

Antique Niagara ball bearing clothes mangler wringer No 25. Manufactured by Lovell MFG Co.

100.00 - 200.00



## The Traditional Sale (Session One) 2024-10-18-2024-10-28

## LOT #

## 304 "ANTIQUES AND COUNTRY LIVING DECOR" SIGN

Hand painted pressboard sign.

Size: 43 x 74 in.

100.00 - 200.00



## 305 "BRAGG CREEK GENERAL STORE" WOODEN SIGN

Weathered wooden and hand painted advertising sign.

Size: 32 x 87 in.

100.00 - 200.00

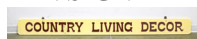


## 306 "COUNTRY LIVING DECOR" WOODEN SIGN

Hand painted wooden advertising sign.

Size: 8 x 90 in.

80.00 - 120.00



## 307 FIVE-O ADVERTISING SIGN

Single-sided embossed tin Five-O advertising sign. The sign features a red orange and brown color palette with a Five-O bottle. The sign has a U.S. Patent No.1,616,721 and marked W.F.R.

Size: 11.75 x 23.5 in.

120.00 - 200.00



## 308 COCA-COLA CARDBOARD SEASONS LITHO SIGN

Double-sided vintage Coca-cola cardboard lithographs contained within a plexiglass frame.

One side features a spring and summer advertisement with a Coca-Cola bottle, bell, blue bird, and reads 'Come and get it'. The other side features a fall winter advertisement with bell clock and steamwhistle, and reads 'Pause'. Both sides marked Coca-cola Ltd. Lithographed in Canada. The sign has creases, and water damage.

Size: 28 x 17 in.

60.00 - 80.00



## LOT #

## 309 COCA-COLA AND ARROW REPRO SIGN COLLECTION (3)

Single-sided round Coca-Cola sign. The reproduction sign features the Coca-Cola logo and bottle. The sign has rolled edges, and has a sticker; 'open road brands' on the back of the sign.

Size: 24 in. diameter.



Single-sided embossed Coca-Cola arrow sign. The reproduction sign features Coca-Cola fishtail design with Coke bottle, the sign reads 'Ice Cold' in black lettering with neon yellow border. The sign has a sticker open road brands on the back of the sign. Has two holes for hanging.

Size: 24 x 14 in.

Single sided exit sign. The artificially distressed arrow shaped sign points left and reads: 'Exit Way-Out' in white. The sign has a sticker: 'Made in China' to the back.

Size: 23 x 14 in.

60.00 - 80.00

## 310 COCA-COLA 'FISHTAIL' ADVERTISING PICNIC COOLER

With side handles and locking lid, each side with embossed 'fish tail' logo.

Size: 15 x 21 x 13 in.

300.00 - 400.00



## 311 WASHINGTON GASOLINE CHIEF SIGN

Single-sided porcelain enameled Washington 'Chief' gasoline sign. The sign features a red border with the Washington 'Chief' mascot in the center. The sign has chip and rust damage to the border and hanging holes with three additional chips to the facade.

Size: 11.75 in. diameter

300.00 - 500.00



## The Traditional Sale (Session One) 2024-10-18-2024-10-28

## LOT #

**312 CIRCULAR GAS ADVERTISING SIGNS (2)**

Two reproduction gas signs including  
Texaco and White Rose Gasoline.  
Diameter: 12 in.  
100.00 - 200.00

**313 SIGNAL GASOLINE FLANGE ADVERTISING SIGN**

Double-sided metal enameled Signal  
gasoline flange sign. The sign features the  
Signal 'Go' light post logo with a black  
background and yellow border.  
Size: 11 x 9.5 in.  
100.00 - 200.00

**314 FRAMED COPPER LIN-X ADVERTISING PRINTING PLATES**

An assembled grouping of ten copper  
printing plates, each depicting various  
containers of Lin-X cleaners.  
Plate size: 3.5 x 2.75 in. each  
Framed size: 14.5 x 22 in.  
80.00 - 120.00

**315 NEVADA LICENSE PLATE AND TOPPER**

Nevada license plate with topper. The  
embossed aluminum license plate reads:  
847-JCV The Silver State. The license plate  
is topped by a die-cut metal litho sign. The  
sign features a cattle-drawn covered wagon  
and reads: 'Harold's Club or bust!' The  
sign has minor loss to the facade, with a  
hole next to the 'H' in Harold's. The sign is  
marked Vernon CO Newton IA.  
Size: 13 x 14 in.  
100.00 - 150.00

**316 REPRODUCTION OIL SIGN COLLECTION (3)**

Single-sided embossed Indian motorcycle  
repro sign with rolled edges, and two holes  
for hanging. The sign is officially licensed  
in the bottom right corner.  
Size: 9 x 24 in.



Single-sided embossed tin pointer sign. The

## LOT #

sign features a pointing hand and reads:  
'Gasoline 1 mile' on a yellow backdrop.  
Size: 6.5 x 28 in.

Single-sided, artificially distressed Texaco  
motor gas sign. The reproduction sign  
features the Texaco black 'T', and star logo;  
a black border, with white and black  
lettering. There is a sticker; 'open roads  
brands' on the back of the sign.  
Size: 30 in. diameter  
60.00 - 80.00

**317 WALL MIRROR**

A large hanging wall mirror in a silver  
painted wooden frame.  
Size: 81 x 39 in.  
100.00 - 200.00

**318 WOODEN FRAMED WALL MIRROR**

Gilt framed wall mirror with beveled glass.  
Size: 62.5 x 27 in.  
100.00 - 200.00

**319 WALL MIRROR/COAT RACK**

Central beveled mirror and five brass coat  
hooks. All within a carved wooden frame.  
Size: 26.5 x 42 in.  
100.00 - 200.00

**320 ARTS & CRAFTS WALL MIRROR, KENDALL-HANDICRAFTS**

An oval oak framed wall mirror by Arthur  
W. Simpson. The "Kendall – Handicrafts"  
line was a renowned arts and crafts maker  
associated with very high-quality  
hand-crafted furniture.  
Size: 19.5 x 26.5 in.  
100.00 - 200.00



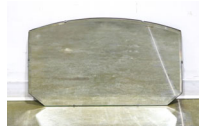
## The Traditional Sale (Session One) 2024-10-18-2024-10-28

## LOT #

**321 WALL MIRROR**

A antique horizontal wall mirror with bevel frame, wood backing, and chain for hanging.

Size: 16 x 27 in.



Provenance: collection of Bev & Victor Fortinski, Calgary AB (Old Courthouse Antiques, Hanna AB)

60.00 - 80.00

**322 WALL MIRROR**

A vertical wall mirror with decorative beveled edge, thick glass, wood backing, and chain for hanging.

Size: 22 x 11.75 in.



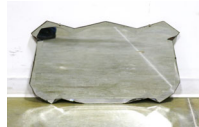
Provenance: collection of Bev & Victor Fortinski, Calgary AB (Old Courthouse Antiques, Hanna AB)

60.00 - 80.00

**323 GEOMETRIC WALL MIRROR**

A geometric wall mirror with bevel frame, wood backing and chain for hanging. The mirror has a small chip to the frame.

Size: 15 x 26 in.



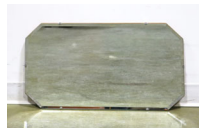
Provenance: collection of Bev & Victor Fortinski, Calgary AB (Old Courthouse Antiques, Hanna AB)

60.00 - 80.00

**324 WALL MIRROR**

A wall mirror with thick glass, wood backing, and beveled edge. The horizontal mirror is marked Puritan mirrors with a small chip to the border.

Size: 26 x 15 in.



Provenance: collection of Bev & Victor Fortinski, Calgary AB (Old Courthouse Antiques, Hanna AB)

60.00 - 80.00

## LOT #

**325 WALL MIRROR**

A antique wall mirror with weaving bevel frame, wood backing, and chain for hanging. The mirror has four small chips to the bevel frame.

Size: 27 x 15.5 in.



Provenance: collection of Bev & Victor Fortinski, Calgary AB (Old Courthouse Antiques, Hanna AB)

60.00 - 80.00

**326 PAINTED MIRROR PAIR (2)**

Wood framed mirrors with painted floral design. One of the mirrors has loss to the inner frame.

Size: 28 x 18 in.



Provenance: collection of Bev & Victor Fortinski, Calgary AB (Old Courthouse Antiques, Hanna AB)

60.00 - 80.00

**327 REVERSE PAINTED MIRROR PAIR (2)**

Reverse painted mirrors with wood frames. The mirrors feature painted swallow and floral design over a etched urn.

Size: 32.5 x 21 in.



Provenance: collection of Bev & Victor Fortinski, Calgary AB (Old Courthouse Antiques, Hanna AB)

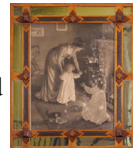
80.00 - 120.00

**328 ARTHUR J. ELSLEY, FRAMED LITHOGRAPH**

"Mother's Treasures", published as a supplement to the Family Herald and Weekly Star of Montreal. Some losses and additional condition issues noted.

Contained with a mirror and chip-carved decorative frame.

Size: 19.5 x 15.5 in. / Framed: 26.75 x 22.75 in.



Provenance: collection of Bev & Victor Fortinski, Calgary AB (Old Courthouse

## The Traditional Sale (Session One) 2024-10-18-2024-10-28

**LOT #**

Antiques, Hanna AB)  
100.00 - 150.00

**329 VINTAGE CANADIAN ROCKIES PANORAMIC PHOTOGRAPH**

An early 20th century sepia photograph  
“Canada’s Mountain Empire – Canadian  
Rockies” in a gilt highlighted quarter sawn  
oak period frame. Titled on a stenciled gilt  
plaque below the image. This monumental  
scale panorama shows Lake O’Hara and  
Lake McArthur from a high alpine  
viewpoint.

Image size: 14.75 x 94 in. / Framed: 20.75  
x 99.5 in.

1,000.00 - 2,000.00

**330 ARCHIBALD THORBURN, STEEL ENGRAVING**

American [1860-1935]

“The Sunny Side of the Hill”

Size: 13 x 18 in. / Framed: 18 x 23 in.

70.00 - 100.00

**331 VINTAGE BANFF NATIONAL PARK PHOTOGRAPH**

An early 20th century large scale b/w  
photograph “Giant Stairway-Banff National  
Park” by an unidentified photographer.  
Identified on a plaque on the period oak  
frame.

Size: 19 x 15 in. / Framed: 22.75 x 18.75  
in.

150.00 - 200.00

**332 CANADIAN NATIONAL RAILWAYS HISTORICAL PHOTOGRAPH**

“Hells Gate-British Columbia-Fraser River  
Canyon”, sepia photograph in period  
framing. Identified on a framed mounted  
plaque below the image.

Size: 18.5 x 28.5 in. / Framed: 21.75 x 31.5  
in.

500.00 - 700.00

**LOT #****333 CANADIAN NATIONAL RAILWAYS HISTORICAL PHOTOGRAPH**

“Mount Athabasca-Jasper National Park,  
Alberta”, sepia photograph in period  
framing. Identified on a framed mounted  
plaque below the image.

Size: 18.75 x 28.5 in. / Framed: 21.75 x  
31.5 in.

500.00 - 700.00

**334 CANADIAN NATIONAL RAILWAYS VINTAGE PHOTOGRAPH**

“Mount Robson”

Vintage sepia photograph in period frame  
with identification plaque below image.

Size: 18.5 x 28.5 in. / Framed: 21.5 x 31.5  
in.

300.00 - 400.00

**335 CANADIAN NATIONAL RAILWAYS HISTORICAL ENGRAVING**

An engraving "Jasper" of the Jasper Park  
Lodge, celebrating its construction in  
1921-22. Ed. #107/500, likely issued by  
CNR as a commemorative.

Size: 23.5 x 27.5 in. / Framed: 28 x 32 in.

300.00 - 400.00

**336 VINTAGE MT. ROBSON PHOTOGRAPH**

period framing.

Size: 32 x 19.5 in. / Framed: 34.75 x 22.5  
in.

400.00 - 600.00

**337 VINTAGE BANFF PHOTOGRAPHS (2), WILLIAM JOHN OLIVER**

British/Canadian [1887-1954]

“Overlooking Banff, 1929, Banff N.P.”

Size: 6.25 x 9 in. / Framed: 12.25 x 15  
in.

“Banff Springs Hotel, 1929, Banff N.P.”

Size: 6 x 9 in. / Framed: 11.75 x 15 in.





## The Traditional Sale (Session One) 2024-10-18-2024-10-28

**LOT #**

Note: William John Oliver, 1887-1954, began his photography career in 1910 as a newspaper photographer for the Morning Albertan and later the Calgary Herald. Opening the W.J. Oliver Photographic Studio in 1912, Bill Oliver went on to become one of Canada's most well-known adventure, nature, and documentary photographers.  
200.00 - 300.00

**338 VINTAGE WATERTON PHOTOGRAPHS (2), WILLIAM JOHN ...**

OLIVER  
British/Canadian [1887-1954]  
"Pass Creek, Waterton N.P."  
Size: 9 x 6.5 in. // Framed: 15 x 12.5 in.  
  
"4th Tee 1934, Waterton N.P."  
Size: 7 x 9 in. / Framed: 13 x 15 in.



Note: William John Oliver, 1887-1954, began his photography career in 1910 as a newspaper photographer for the Morning Albertan and later the Calgary Herald. Opening the W.J. Oliver Photographic Studio in 1912, Bill Oliver went on to become one of Canada's most well-known adventure, nature, and documentary photographers.  
200.00 - 300.00

**339 VINTAGE BOW RIVER RANCH PHOTOGRAPH, MONTGOMERY**

A sepia photograph showing the Bow River Ranch west of Calgary, with foreman Hugh McNaughton in front of a herd of cattle.  
Signed Montgomery in the print.  
Size: 7 x 9 in. / Framed: 13 x 15 in.  
100.00 - 200.00


**340 VINTAGE LAKE LOUISE ROYAL VISIT PHOTOGRAPHS**

Two b/w photographs in a single frame  
"Returning to the Cottage, Lake Louise",  
Sept 15, 1912  
"At the Cottage, Lake Louise" Sept 15, 1912  
Each 4.5 x 6.5 in. / Framed: 14.75 x 10.75 in.

**LOT #**

Each titled & dated on the verso  
200.00 - 300.00

**341 VINTAGE SILVER GELATIN PHOTOGRAPH, HARRY POLLARD**

Canadian [1880-1968]  
"Calgary Stampede", showing the Indian Village on the north side of the track  
Size: 7.5 x 9.5 in. / Framed: 13.5 x 15.5 in.  
100.00 - 150.00


**342 VINTAGE SILVER GELATIN PHOTOGRAPH, UNIDENTIFIED ..**

... PHOTOGRAPHER  
Showing two couples in front of the Royal Hotel at the Calgary Stampede parade, with mounted First Nations riders behind  
Size: 7.25 x 9.25 in. / Framed: 10 x 12 in.  
100.00 - 150.00


**343 VINTAGE PHOTOGRAPH, WALLACE R. MacKASKILL**

Canadian [1890-1965]  
"Schooners Racing, Nova Scotia (1921)"  
Size: 15.5 x 19.5 in. / Framed: 27.25 x 34 in.  
Signed & titled on the mount  
200.00 - 400.00


**344 VINTAGE PHOTOGRAPHS (3), WALLACE R. MacKASKILL**

Canadian [1890-1965]  
"Out of Halifax"  
Size: 4.5 x 6.5 in. / Framed: 10.75 x 12.75 in.  
Signed & titled on the mount



"Marine Reflections"  
Size: 4.5 x 6.5 in. / Framed: 10.5 x 12.5 in.  
Signed & titled on the mount

"The Starboard Lookout"  
Size: 5.25 x 3.75 in. / Framed: 8.75 x 6.75 in.  
Signed & titled on the mount  
150.00 - 250.00

## The Traditional Sale (Session One) 2024-10-18-2024-10-28

## LOT #

**345 VINTAGE HAND-TINT PHOTOGRAPHS (2), WALLACE R. ...**

... MacKASKILL

Canadian [1890-1965]

"Bluenose, Schooner Champion"

Size: 4.5 x 6.5 in. / Framed: 14 x 15.5 in.



"Surf at Peggy's Cove (1938)"

Size: 4.5 x 6.5 in. / Framed: 8.25 x 10.25 in.

150.00 - 250.00

**346 WILLIAM (BILL) DUMA, LINOCUT**

Canadian ASA, RCA [b. 1936]

"Heritage Park Series 2A"; ed. #51/75

Size: 7 x 9.25 in. / Framed: 13 x 17 in.

80.00 - 100.00

**347 FINE ART B/W PHOTOGRAPH, UNIDENTIFIED PHOTOGRAPHER**

Canadian [20th/21st century]

An untitled b/w photograph of a detail of the Centre Street Bridge, Calgary AB.

Size: 24 x 24 in. / Framed: 36 x 36 in.

150.00 - 200.00

**348 FINE ART B/W PHOTOGRAPH, UNIDENTIFIED PHOTOGRAPHER**

Canadian [20th/21st century]

An untitled b/w photograph of the sculpture "Wonderland" by Jaume Plensa in front of the Bow Building in Calgary AB.

Size: 24 x 24 in. / Framed: 36 x 36 in.

150.00 - 200.00

**349 FINE ART B/W PHOTOGRAPH, UNIDENTIFIED PHOTOGRAPHER**

Canadian [20th/21st century]

An untitled b/w photograph of a detail of the Hudson's Bay Building, Calgary AB.

Size: 24 x 24 in. / Framed: 36 x 36 in.

150.00 - 200.00



## LOT #

**350 FINE ART B/W PHOTOGRAPH, UNIDENTIFIED PHOTOGRAPHER**

Canadian [20th/21st century]

An untitled b/w photograph of the pagoda roof on the Chinese Cultural Centre, Calgary AB.

Size: 24 x 24 in. / Framed: 36 x 36 in.

150.00 - 200.00

**351 ART DECO STYLE PAINTING, AFTER TAMARA de LEMPICKA**

Polish [1898-1980]

A contemporary copy of "Portrait of Ira P" by the famed Polish painter.

Size: 40 x 30 in. / Framed: 48.5 x 38.5 in.



Note: The original painting after which this copy is painted was sold by Christies in London in 1998 for USD \$ 1.2 million.

500.00 - 700.00

**352 MARTIN HUTCHINSON, WATERCOLOUR ON PAPER (3)**

British RIBA [19th/20th century]

"Wallingford Town Hall"; 1927

"Near Thorney"

"Malvern"; 1928

Size: 8.5 x 6in. (and smaller) / Framed:

16.5 x 13 in. (and smaller), dimension vary

Lot of Three

150.00 - 200.00

**353 NICHOLAS HORNYANSKY, AQUATINT ETCHINGS (2)**

Hungarian/Canadian CPA, CSGA, OSA, RCA [1896-1965]

1. "Icebound Creek"

Size: 5.25 x 4.25 / Framed: 13 x 10.5 in.

2. "Old Church of Canada (Holy Trinity, Toronto)"

Size: 4 x 5.25 in. / Framed: 13 x 10.5 in.

Lot of Two

150.00 - 250.00



## The Traditional Sale (Session One) 2024-10-18-2024-10-28

## LOT #

## 354 ITALIAN PIETRA DURA INLAID PLACQUES (2)

Two Florentine commessos, each depicting Italian landscapes, each dated 1956 and shown in gilt frames.

Panel size: 12.25 x 9.5 in. / Framed: 16.5 x 13.5 in.

400.00 - 700.00



## 355 THOMAS WILLIAM FRIPP, WATERCOLOUR ON PAPER

Canadian BCSA [1864-1931]

"Pitt Lake"

Size: 4 x 6.5 in.

-signed lower left

Provenance: Petley Jones Gallery

Vancouver (label verso)

200.00 - 300.00



## 356 MARY EVELYN WRINCH, GRAPHITE &amp; WATERCOLOUR

Canadian CPE, OSA, RCA [1877-1969]

Untitled, Flowers

Size: 8.25 x 8.25 in. / Framed: 15.75 x 14.5 in.

200.00 - 300.00



## 357 EDWARD SHERIFF CURTIS, PHOTOGRAVURE

American [1868-1952]

"Apache Still Life"; 1903

Size: 5.25 x 7 in. 16.5 x 17.75 in.

Note: This work is listed as being a 1966 restrike.

200.00 - 300.00



## 358 EDWARD SHERIFF CURTIS, PHOTOGRAVURE

American [1868-1952]

"Asparoke Camp"; 1908

Size: 5.25 x 7 in. x 16.25 x 17.5 in.

Note: This work is listed as being a 1966 restrike.

200.00 - 300.00



## LOT #

## 359 ANTONIO DIEGO VOCI, OIL ON CANVAS

Italian [1920-1985]

"Children Playing"

Size: 31.5 x 23.5 in. / Framed: 38.75 x 30.75 in.

400.00 - 700.00



## 360 A. DE VITI, OIL ON CANVAS

[mid 20th century]

Untitled, Paris Street Scene - Moulin Rouge

Size: 24 x 36 in. / Framed: 31.5 x 43.5 in.

200.00 - 300.00



## 361 JOSE ROYO, OIL ON CANVAS

Spanish [b. 1941]

"Jardin De Atenas"

Size: 24 x 29 in. / Framed: 33.75 x 39 in.

signed lower right; titled on label verso



Provenance: Dolphin Galleries, Hawaii

(original purchase price USD \$ 16,850)

2,000.00 - 3,000.00

## 362 ANTIQUE ENGRAVING &amp; ETCHINGS (3)

Guiseppe Wagner, German [1706-1786],

after Jacopo Amigoni, Italian [ca.

1785-1752]

1) "David and Abigail"; ca. 1745;

published by Joseph Wagner

Size: 21 x 13.5 in. / Framed: 27.25 x 19 in.

-and two others of unknown title.

Size: 19.5 x 12.75 in. each / Framed: 25.75

x 18 in. each



Provenance: collection of Bev & Victor

Fortinski, Calgary AB (Old Courthouse

Antiques, Hanna AB)

200.00 - 400.00

## The Traditional Sale (Session One) 2024-10-18-2024-10-28

## LOT #

**363 ALOIS ARNEGGER, OIL ON CANVAS LAID ON MASONITE**

Austrian [1879-1963]

Size: 29 x 39 in. / Framed: 36.5 x 47 in.

\*small losses noted

Provenance: This painting was acquired in Germany circa 1930 by Hans Krussman, grandfather of the consignor, and passed by descent through family (Edmonton/Calgary AB). The work was removed from the frame and rolled prior to the outbreak of the war, when the Krussman's left Europe for Canada. The painting was purchased directly from the artist and has been in one family collection.

500.00 - 800.00

**364 JOHN THOMAS RICHARDSON, OIL ON BOARD**

British/Canadian [1860-1942]

"The Cottage in the Wood", Cornwall, England"

Size: 15.75 x 20 in. / Framed: 22.5 x 26.75 in.

200.00 - 300.00

**365 JOHN THOMAS RICHARDSON, OIL ON BOARD**

British [1860-1942]

Untitled, Figures by a Falmouth Cottage

Size: 13.75 x 17.75 in. / Framed: 19.5 x 23.5 in.

200.00 - 300.00

**366 FREDERICK (FRED) HINES, WATERCOLOUR**

British [1860-1930]

Untitled, Woman Walking on a Windswept Autumn Path

Size: 15.25 x 22 in. / Framed: 27 x 33.75 in.

200.00 - 400.00



## LOT #

**367 WILLIAM GARNET HAZARD, WATERCOLOUR**

Canadian CPE [1903-1987]

Untitled, Still Life with Vegetables

Size: 18 x 24 in. / Framed: 31 x 36.25 in.

Provenance: Loch &amp; Mayberry Fine Art, Winnipeg MB

250.00 - 350.00

**368 VICTORIAN GILT-FRAMED CRYSTOLEUM**

After Charles Zachaire Landelle

French [1821-1908]

"Ruth"

Size: 14 x 11 in. / Framed: 18 x 15 in.



Provenance: collection of Bev & Victor Fortinski, Calgary AB (Old Courthouse Antiques, Hanna AB)

70.00 - 90.00

**369 ANTIQUE GILT FRAMED PRINT**

"The Shepherdess"; 1889 by William Bouguereau.

Size: 14.5 x 8.5 in. each / Framed: 23.5 x 16.75 in.



Provenance: collection of Bev & Victor Fortinski, Calgary AB (Old Courthouse Antiques, Hanna AB)

80.00 - 120.00

**370 IRENE RUTTAN, WATERCOLOUR**

Canadian [20th/21st century]

"Yellow &amp; Green Spring"

Size: 12 x 22 in. / Framed: 17.5 x 27.5 in.

Provenance: collection of Bev & Victor Fortinski, Calgary AB (Old Courthouse Antiques, Hanna AB)

100.00 - 150.00





## The Traditional Sale (Session One) 2024-10-18-2024-10-28

## LOT #

**371 HOWARD L. HILL, OIL ON CANVAS**

British/American [d. 1870]

Untitled, Chickens

Size: 10 x 16 in. / Framed: 18.75 x 24.75 in.

Note: Howard L. Hill was the maternal grandfather of artist Norman Rockwell.

400.00 - 500.00

**372 DUTCH SCHOOL, OIL ON CANVAS**

[mid 20th century]

Untitled, Canal Scene with Boats and Windmill

Size: 19.75 x 15.75 in. / Framed: 26.75 x 23 in.

Note: Signed indistinctly. Canadiana House (Calgary) label verso

150.00 - 250.00

**372A HENRI PERRE, WATERCOLOUR**

Canadian OSA, RCA [1828-1890]

Untitled, Country Road with Distant Mountains

Size: 13 x 22 in. / Framed: 22.75 x 31.75 in.

250.00 - 350.00

**373 RONALD LAMBERT MOORE, WATERCOLOUR ON PAPER**

British [1927-1992]

Untitled, St. Mary's Island, Off Whitley Bay, Tyne and Wear

Size: 11.25 x 21 in.

-signed lower right

100.00 - 200.00

**374 FRANZ WALDEGG, OIL ON CANVAS**

Austrian [1888-1966]

Untitled, Crashing Waves at Sunset

Size: 24 x 36 in. / Framed: 32.75 x 44.75 in.

300.00 - 500.00



## LOT #

**375 JOSEPH ERNEST SAMPSON. WATERCOLOUR**

Canadian OSA, RCA [1887-1946]

Untitled; A Rocky Coast

Size: 8 x 12.25 in. / Framed: 17.5 x 21 in.

200.00 - 300.00

**376 GUIDO ODIERNA, OIL ON CANVAS**

Italian [1913-1991]

Untitled, Seascape

Size: 16 x 20 in. / Framed: 22.75 x 26.5 in.

200.00 - 300.00

**377 EARLY AMERICAN SCHOOL, OIL ON CANVAS**

EARLY AMERICAN SCHOOL, OIL ON CANVAS

Early 19th century

Untitled; Figures in a Landscape

Size: 18.5 x 23 in. oval / Framed: 25.5 x 30 in. each

Signed indistinctly lower centre



Provenance: collection of Bev &amp; Victor Fortinski, Calgary AB (Old Courthouse Antiques, Hanna AB)

120.00 - 180.00

**378 GEORGE III PERIOD MEZZOTINT, JOSEPH GROZER**

British [active 1787-1797]

"A Lady with a Child", after the original painting by Joshua Reynolds, published in London, May 10th, 1787.

Size: 10.5 x 8.75 in. / Framed: 20.25 x 18.5 in.

150.00 - 250.00

**379 ANTIQUE STEVENGRAPH SILK WEAVING**

after Marie Wunsch

Austrian [1862-1898]

"Le Secret"

Size: 11 x 7 in. / Framed: 20.75 x 15.75 in.



Provenance: collection of Bev &amp; Victor Fortinski, Calgary AB (Old Courthouse



## The Traditional Sale (Session One) 2024-10-18-2024-10-28

**LOT #**

Antiques, Hanna AB)

60.00 - 90.00

**380 VICTORIAN HAND-TINT LITHOGRAPH**

Showing a courting couple, well framed in a period gilt and oak.

Size: 17 x 12.75 in. each / Framed: 29 x 25.25 in. each

Provenance: collection of Bev & Victor Fortinski, Calgary AB (Old Courthouse Antiques, Hanna AB)  
100.00 - 150.00**381 WILLIAM LEES JUDSON, OIL ON CANVAS (RELINED)**

American [1842-1928]

"The Lunch Basket"; 1889

Size: 24 x 20 in. / Framed: 31.5 x 27.5 in.

Provenance: Kaspar Gallery, Toronto ON  
750.00 - 1,000.00**382 MARY GEORGINA WADE WILSON, PASTEL**

Scottish [1856-1939]

"Three...Maids from School"

Size: 23.5 x 19.5 in. / Framed: 31 x 26.75 in.

300.00 - 500.00

**383 VINTAGE HELL'S GATE PHOTOGRAPH**

An early 20th century large scale sepia photograph of Hell's Gate on the Fraser River just south of Boston Bar, BC; in period oak framing.

Size: 18 x 24 in. / Framed: 29.5 x 35.5 in.  
400.00 - 600.00**384 HARLEY BROWN, PASTEL (2)**

Canadian CAA, NAWA, NWR, OPA [b. 1939]

Untitled, Portrait of a Woman with Blonde Hair

Untitled, Portrait of a Young Boy with Chopsticks

Size: 23.5 x 17.75 in. each / Framed: 26.5 x

**LOT #**

20.5 in.

Provenance: collection of Bev & Victor Fortinski, Calgary AB (Old Courthouse Antiques, Hanna AB)  
200.00 - 400.00**385 AMERICAN SCHOOL "L. THOMAS", OIL ON PAPER/CARD**

[late 19th/early 20th century]

Untitled, Portrait of a Dog

Size: 7 x 9 in. / Framed: 14.25 x 16.5 in.  
100.00 - 150.00**386 CANADIAN SCHOOL, OIL ON CANVAS**

A late 19th/early 20th century portrait of a seated child.

Size: 20 x 16 in. each / Framed: 23.5 x 19.75 in.

Provenance: collection of Bev & Victor Fortinski, Calgary AB (Old Courthouse Antiques, Hanna AB)  
100.00 - 140.00**387 GEORGE BAXTER, OIL COLOUR PRINT**

British [1804-1867]

"The Fruit Girl of the Alps"

Size: 10 x 8.5 in. / Framed: 19.25 x 16.25 in.

Provenance: collection of Bev & Victor Fortinski, Calgary AB (Old Courthouse Antiques, Hanna AB)  
70.00 - 100.00**388 CANADIAN SCHOOL, OIL PAINTING**

An untitled early 20th century oil painting on board of a stream at sunset.

Size: 29.75 x 11.5 in. / Framed: 34 x 15.75 in.

Note: some losses noted on the framing.

Provenance: collection of Bev & Victor Fortinski, Calgary AB (Old Courthouse Antiques, Hanna AB)  
70.00 - 100.00

## The Traditional Sale (Session One) 2024-10-18-2024-10-28

## LOT #

**389 HISTORICAL ENGRAVING, ELIZABETH THOMPSON**

Later known as Lady Butler  
British [1846-1933]

“Scotland Forever-The Charge of the Greys  
at Waterloo”

Size: 13.5 x 25.5 in. / Framed: 19.25 x 31.5  
in.

80.00 - 120.00

**390 HISTORICAL SPORTING PHOTOGRAPH**

A formal photograph of an 1896  
Championship basketball team by an  
unknown photographer, in period framing.  
Size: 12.25 x 16.25 in. / Framed: 15.25 x  
19.25 in.

80.00 - 120.00

**391 VINTAGE CAB DRIVERS PHOTOGRAPH**

A sepia photograph showing a group of taxi  
cab owners, circa 1912; titled on the  
backing paper “Taxi owners in Calgary;  
1912” and signed Cruikshank.

Size: 7.75 x 9.75 in. / Framed: 8.75 x 10.75  
in.

100.00 - 150.00

**392 VINTAGE OROTONE, PHOTOGRAPHER UNIDENTIFIED**

Untitled, canoe below a rocky cliff face  
Size: 8.25 x 6.25 in. / Framed: 10 x 7.5 in.

100.00 - 200.00

**393 VINTAGE EDWARD S. CURTIS OROTONE**

American [1868-1952]

Untitled, American Indians fishing from a  
canoe

Size: 8.25 x 13.5 in. / Framed: 10 x 15.5 in.  
Signed in the image

500.00 - 1,000.00



## LOT #

**394 VINTAGE DR. EDWARD H. LATHAM OROTONE**

American [1843-1928]

“Nez Perce Indians, Nespelem  
Washington”; circa 1903

Size: 8 x 14 in. / Framed: 10 x 16 in.  
200.00 - 400.00

**395 CONTINENTAL MARQUETRY FRUITWOOD PANEL**

The antique panel depicts a goldfinch  
perched on a tree bough, framed behind  
glass.

Framed size: 25 x 18.25 in.  
150.00 - 250.00

**396 ALEXANDER YOUNG, OIL ON CANVAS**

Scottish RSA [1865-1923]

"Off the Fishing Ground, Fife"; 1913

20 x 30.25 in. / Framed: 26.5 x 36.5 in.  
600.00 - 900.00

**397 VINTAGE HAND TINT PHOTOGRAPH, ALFRED BLYTH**

Scottish/Canadian [1901-1980]

“Lake Louise, Banff Park”; signed & titled  
on the matting

Size: 10.5 x 13.5 in. / Framed: 22.5 x 24.5  
in.

150.00 - 200.00

**398 THOMAS MOWER MARTIN, WATERCOLOUR**

Canadian OSA, RCA [1838-1934]

"The Thames Below Kew Bridge"

Size: 10.75 x 15 in. / Framed: 16.75 x 21  
in.

250.00 - 350.00



## The Traditional Sale (Session One) 2024-10-18-2024-10-28

**LOT #****399 ERNEST J. HUTCHINS, WATERCOLOUR**

Canadian [ca 1880-1935]

"From Foot of Eagle Peak, Selkirk Mountains"; 1911

Size: 11 x 13.75 in. / Framed: 20.25 x 23.25 in.

Note: Additionally inscribed "Winnipeg" between the signature and date.

Provenance: Art Gallery Ganser, Calgary AB

150.00 - 200.00

**400 MICHAEL J. STANFIELD, WATERCOLOUR**

Canadian [20th century]

"Afternoon Mist, Foothills"

Size: 10.75 x 14.5 in. each / Framed: 16.75 x 20 in.

Provenance: collection of Bev &amp; Victor Fortinski, Calgary AB (Old Courthouse Antiques, Hanna AB)

120.00 - 160.00

**401 FRANK THOMAS CARTER, OIL ON BOARD**

British [1853-1934]

"Late Autumn, Borrowdale"

Size: 7 x 14 in. / Framed: 13.25 x 20.25 in.

Provenance: Gallery De Jonge, Edmonton AB

100.00 - 200.00

**402 FRANK THOMAS CARTER, OIL ON BOARD**

British [1853-1934]

"Derwent Water"

Size: 7 x 14 in. / Framed: 13.25 x 20.25 in.

Provenance: Gallery De Jonge, Edmonton AB

100.00 - 200.00

**LOT #****403 CORNELIS ANTHONIJ VAN WANING, OIL ON CANVAS/ PANEL**

Dutch [1861-1929]

Untitled, Boats in a Canal

Size: 9.5 x 12 in. / Framed: 15.5 x 18 in.

200.00 - 400.00

**404 RONALD YORK WILSON, OIL ON CANVAS**

Canadian OSA, RCA [1907-1984]

"Los Posos"

Size: 18 x 24 in. / Framed: 25.5 x 31.5 in.

Provenance: The Collector's Gallery, Calgary AB

500.00 - 800.00

**405 HENRY COOPER, OIL ON CANVAS**

British [late 19th/early 20th century]

"Hay Tor, Devon"

Size: 19.75 x 30 in. / Framed: 27.75 x 37.75 in.

300.00 - 500.00

**406 THOMAS WILLIAM FRIPP, WATERCOLOUR ON PAPER (2)**

Canadian BCSCA [1864-1931]

"Rock and Timber"

Size: 7.5 x 5 in.

-signed lower right; titled on conservation papers attached verso

Untitled, A Rocky Lakeshore

Size: 7.5 x 5 in.

-signed lower right

300.00 - 500.00

**407 DOUGLAS GRAHAM, HAND-TINTED LITHOGRAPH (2)**

British [19th century]

After the original paintings "Glen Lannox (Arran)" &amp; "Ellen's Isle (Loch Katrine)", each published by Felix Rosenstiel, London.

Size: 24 x 12.75 in. each / Framed: 34.75 x 22.25 in. each



## The Traditional Sale (Session One) 2024-10-18-2024-10-28

## LOT #

Provenance: collection of Bev & Victor Fortinski, Calgary AB (Old Courthouse Antiques, Hanna AB)  
150.00 - 200.00

**408 HELEN CRAIG, OIL ON CANVAS**

Canadian [1910-?]  
"Maligne Lake, R. Mountains"; 1937  
Size: 16 x 22 in. / Framed: 26 x 32 in.  
Provenance: Masters Gallery, Calgary AB  
400.00 - 600.00

**409 VINTAGE HAND TINT PHOTOGRAPH**

Untitled, Two White Tail Deer in Winter;  
by an unidentified photographer.  
Size: 15.5 x 19.5 in. / Framed: 26.5 x 29.5 in.  
Note: this is a very unusually large photograph.  
150.00 - 250.00

**410 VINTAGE HAND TINT ALBERTA GOVERNMENT PHOTO**

"Herbert Lake"; titled & stamped "Alberta Government Photo" on the matting  
Size: 15.5 x 19.5 in. / Framed: 26.5 x 29.75 in.  
Note: this is a very unusually large photograph.  
200.00 - 300.00

**411 VINTAGE HAND TINT PHOTOGRAPH, ALFRED BLYTH**

Scottish/Canadian [1901-1980]  
"Mt. Rundle, Banff Park"; signed & titled on the matting  
Size: 9.5 x 7.75 in. / Framed: 14.75 x 12.75 in.  
120.00 - 180.00



## LOT #

**412 VINTAGE HAND TINT PHOTOGRAPH**

A mid-20th century hand tint of Mt. Rundle from Vermillion Lakes by an unidentified photographer.  
Size: 10.5 x 6.5 in. / Framed: 17 x 12.5 in.  
120.00 - 180.00

**413 VINTAGE HAND TINT PHOTOGRAPH, WILLIAM HUGH RIBELIN**

American [1871-1959]  
"Kalmalka Lake, B.C."; signed & titled on the embossed mount.  
Size: 7.5 x 9.5 in. / Framed: 12.75 x 14.75 in.  
100.00 - 150.00

**414 VINTAGE HAND TINT PHOTOGRAPH, RAY CHRISTIE LANE**

Canadian [1889-1943]  
"Lake Louise"; titled on the embossed mount which further shows the retail stamp of Lane's Studio, Calgary, Alta.  
Size: 7.5 x 9.5 in. / Framed: 13.25 x 15.25 in.



Note: Lane studied photography with E.B. Curlette of Calgary and moved to High River, Alberta in 1911 to establish his own photography studio. During WW1 he served in the armed forces as an instructor in photography. He went back to operating his studio which by 1920, now in Calgary, was called Lane's Studio. Besides his studio work Ray also held photo contracts with oil companies and southern Alberta air schools.  
120.00 - 180.00

**415 VINTAGE HAND TINT PHOTOGRAPH, WALLACE R. MacKASKILL**

Canadian [1890-1965]  
"Landwash, Peggy's Cove, N.S."  
Size: 7.5 x 9.25 in. / Framed: 15 x 17 in.  
Signed & titled on the mount;  
MacAskill-Crosby Pictures Ltd., Halifax  
retailers label verso  
150.00 - 250.00





## The Traditional Sale (Session One) 2024-10-18-2024-10-28

**LOT #****416 VINTAGE HAND TINT PHOTOGRAPH, GEORGE NOBLE**

British/Canadian [1879-1965]

"Bow Falls"; signed &amp; titled on the matting

Size: 7.5 x 9.5 in. / Framed: 13 x 16 in.

120.00 - 180.00

**417 VINTAGE HAND TINT PHOTOGRAPH, J. FRED SPALDING**

Canadian [1877-1958]

"Cameron Lake, Waterton Lakes Park, Alberta"; signed &amp; titled on the matting.

Size: 6 x 8 in. / Framed: 12 x 15 in.

100.00 - 150.00

**418 VINTAGE HAND TINT PHOTOGRAPH, J. FRED SPALDING**

Canadian [1877-1958]

"Cameron Lake, Waterton-Glacier International Park, Alberta"; signed &amp; titled on the matting.

Size: 6 x 8 in. / Framed: 12 x 15 in.

100.00 - 150.00

**419 VINTAGE HAND TINT PHOTOGRAPH**

A mid-20th century hand tint of Lake Minnewanka by an unidentified photographer; titled on the embossed mount.

Size: 6.5 x 10.75 in. / Framed: 12.25 x 16.25 in.

120.00 - 180.00

**420 VINTAGE HAND TINT PHOTOGRAPH, J. FRED SPALDING**

Canadian [1877-1958]

"Red Rock Canyon, Waterton Lakes Park, Alberta"; signed &amp; titled on the matting.

Size: 6 x 8 in. / Framed: 12.5 x 15.5 in.

100.00 - 150.00

**LOT #****421 VINTAGE HAND TINT PHOTOGRAPHS (2)**

Two mid-20th century hand tints photographs, by an unidentified photographer:

1) "Moraine Lake"; titled on the matting

Size: 7.25 x 9.25 in. / Framed: 13 x 16 in.

2) "Mt. Rundle"; titled on the matting

Size: 4.5 x 6.5 in. / Framed: 10.75 x 13 in.

Lot of Two

150.00 - 200.00

**422 VINTAGE HAND TINT PHOTOGRAPH, GEORGE NOBLE**

British/Canadian [1879-1965]

"Mt. Rundle"; signed &amp; titled on the matting

Size: 9 x 11 in. / Framed: 15 x 17 in.

120.00 - 180.00

**423 VINTAGE HAND TINT PHOTOGRAPH, A.E. CROSS & SON**

British/Canadian [ca. 1890-1951]

"Waterton Lake Park, Alberta"; signed &amp; titled on the double embossed mount;

Size: 7.5 x 9.5 in. / Framed: 13 x 15 in.

120.00 - 180.00

**424 VINTAGE HAND TINT PHOTOGRAPH, J.D. ANDERSON JR.**

Canadian [20th century]

"Mistaya Canyon"; signed "J.D. Anderson Jr., Banff" &amp; titled on the matting

Size: 13.25 x 10.25 in. / Framed: 22.75 x 18.5 in.

150.00 - 200.00

**425 VINTAGE HAND TINT PHOTOGRAPH, LAKE LOUISE**

A mid-20th century hand tint of Lake Louise and Victoria Glacier by an unidentified photographer; retailers label verso from The McDermid Drug Co. Ltd., Calgary, Lacombe, Castor, High River.

Size: 13.5 x 7.5 in. / Framed: 19.25 x 13.25





## The Traditional Sale (Session One) 2024-10-18-2024-10-28

## LOT #

in.  
120.00 - 180.00

**426 JOACHIM OTTENS, ANTIQUE HAND-COLOURED MAP**

Dutch [1663-1719]  
A large hand-coloured copper engraved map entitled "Le Royaume de Siam, Avec les Royaumes qui leuy font Tributaires, et les Isles de Sumatra, Andemaon, etc. et les Isles Voifine"; from Ottens Atlas, published Amsterdam, circa 1719.  
Size: 18.75 x 21.5 in. / Framed: 30.75 x 33.5 in.  
200.00 - 400.00

**427 GEORGE PHILIP & SON, MAP OF WESTERN CANADA**

"British Columbia, Athabasca & Alberta; with Parts of Saskatchewan & Assiniboia", London: George Philip & Son; London Geographical Institute, c.1890.  
A detailed colour printed lithographic map of British Columbia and Alberta, showing in mountain ranges and elevation features, rivers, lakes, major cities, and railways, and showing a small part of western Saskatchewan and Assiniboine.  
Size: 19.75 x 23.5 in. / Framed: 34.75 x 38 in.  
150.00 - 250.00

**428 CANADIAN PACIFIC HISTORICAL PHOTOGRAPH**

"Lake Louise, Canadian Pacific Rockies", sepia photograph in period framing. Identified on an inset below the image; "Canadian Pacific" burnt into lower centre frame.  
Size: 18.5 x 24.25 in. / Framed: 29.5 x 35.5 in.  
500.00 - 700.00



## LOT #

**429 CANADIAN PACIFIC HISTORICAL PHOTOGRAPH**

"Moraine Lake & Valley of the Ten Peaks, Canadian Pacific Rockies", sepia photograph in period framing. Identified on an inset below the image; "Canadian Pacific" burnt into lower centre frame.  
Size: 18.5 x 24.25 in. / Framed: 29.5 x 35.5 in.  
500.00 - 700.00

**430 EARLY FIRST NATIONS STUDIO PHOTOGRAPHS (2)**

Two framed studio portraits of American Indian sitters in traditional dress.  
Framed sizes: 9.25 x 7.25 in. & 8.25 x 8.25 in.  
100.00 - 200.00

**431 ALFRED WORSLEY HOLDSTOCK, WATERCOLOUR**

Canadian [1820-1901]  
"Outlet of the Lake of the Woods(Monte)"  
Size: 8 x 12.75 in. / Framed: 16.75 x 21.5 in.  
Provenance: Former collection of Arthur Clausen, Edmonton AB  
300.00 - 400.00

**432 ALFRED WORSLEY HOLDSTOCK, WATERCOLOUR**

Canadian [1820-1901]  
"Restook R. N.B."  
Size: 8 x 12.75 in. / Framed: 16.75 x 21.5 in.  
Provenance: Former Collection of Arthur Clausen, Edmonton AB  
300.00 - 400.00

**433 DICK VAN DEN HOOGEN, CHARCOAL DRAWING**

Canadian [1916-1978]  
"Thinking Indian"; 1968  
Size: 19.5 x 16 in. / Framed: 27.5 x 23.5 in.  
Note: some losses noted on the framing.



Provenance: collection of Bev & Victor Fortinski, Calgary AB (Old Courthouse

## The Traditional Sale (Session One) 2024-10-18-2024-10-28

**LOT #**

Antiques, Hanna AB)

70.00 - 100.00

**434 RUTLANDSHIRE WITH OUKHAM AND STANFORD - JOHN SPEED**

British [1552-1629]

17th century copper plate engraved map with later hand-colouring, city plan of "Oakham" top left, "Stamford" top right. Printed in London by T. Bassett and R. Chiswell in 1676.

Size: 15 x 20 in. / Framed: 23.5 x 28 in.  
300.00 - 500.00

**435 NORTHAMPTON SHIRE by JOHN SPEED**

British [1552-1629]

17th century copper plate engraved map with later hand-colouring, decorative cartouche containing county name, "Plan of Northampton" top left and "Peterborow" bottom right (with, unusually a hunting scene at the top of the plan) surmounted by six coats of arms which, as the box above explains are "The armes of those honorable Families that have bene created Earles of Northapto since ye Norman conquest". Battle scene and historical description above town plan of Peterborow; scale of distance surmounted by dividers.

Size: 15.25 x 20 in. / Framed: 23.75 x 28 in.

400.00 - 600.00

**436 FRAMED STITCHED SAMPLERS (2)**

Two samplers including an alphabet sampler with scripture from 1854 and a alphabet sampler dated 1993. Both in wooden frames.

Framed Size: 16 x 23 in. (and smaller)  
200.00 - 300.00

**LOT #****437 HAND EMBROIDERED SILK TABLE MAT**

A needlework table mat made in Dubai by Isaac Mizrahi.

Size: 27 x 43 in.

100.00 - 200.00

**438 HAND KNOTTED WOOL CARPET**

Floral design in an assortment of colours.

Size: 5'9" x 3'

150.00 - 250.00

**439 BOHKARA WOOL CARPET**

A green Bohkara carpet in a geometric design.

Size: 5'3" x 3'

200.00 - 300.00

**440 BOHKARA WOOL CARPET**

A green Bohkara carpet in a geometric design.

Size: 5'1" x 3'

200.00 - 300.00

**441 BOHKARA WOOL CARPET**

A red Bohkara carpet in a geometric design.

Size: 5'3" x 3'

200.00 - 300.00

**442 HAND KNOTTED WOOL CARPET**

Assorted colours in a checker pattern.

Size: 4'11" x 2'11"

200.00 - 300.00



## The Traditional Sale (Session One) 2024-10-18-2024-10-28

**LOT #****443 BAKARA SILK & WOOL CARPET**

Signed, hand-knotted wool and silk in grey palette.

Size: 12'9" x 9'2"

1,500.00 - 2,000.00

**LOT #****449 TURKISH HAND KNOTTED WOOL CARPET**

Origin Dosemealti hand knotted carpet in blues and rust with a geometric pattern.

Size: 6'6" x 4'1"

300.00 - 400.00

**444 HAND KNOTTED WOOL CARPET**

Floral design with central medallion over a red ground.

Size: 9'2" x 4'1"

100.00 - 200.00

**450 TABRIZ HAND KNOTTED WOOL & SILK CARPET**

Floral design with central medallion. Made in Iran.

Size: 11'2" x 8'2"

1,000.00 - 1,500.00

**445 HAND KNOTTED WOOL CARPET**

Floral pattern on a light blue ground.

Condition noted.

Size: 6'1" x 3'

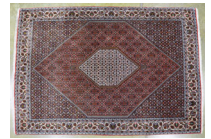
100.00 - 200.00

**451 BIJOAR HAND KNOTTED WOOL CARPET**

Floral design in assorted colours and central medallion. Made in Iran.

Size: 9'5" x 6'7"

400.00 - 600.00

**446 KASHAN HAND KNOTTED WOOL CARPET**

Floral pattern in reds and blues with central medallion. Made in Iran.

Size: 9'9" x 6'5"

600.00 - 800.00

**452 HAND KNOTTED WOOL CARPET**

Floral design in assorted colours over a burgundy and blue ground.

Size: 7'11" x 4'7"

400.00 - 600.00

**447 KELARDASHT PERSIAN CARPET**

Hand knotted wool carpet with central geometric medallion and multi colours over a deep red ground. Accompanied by a local retail replacement certificate.

Size: 8'3" x 10'8"

8,000.00 - 12,000.00

**453 QUM HAND KNOTTED WOOL CARPET RUNNER**

Floral design in assorted colours over a burgundy ground. Made in Iran.

Size: 10'2" x 2'8"

300.00 - 500.00

**448 YALAMEH HAND KNOTTED WOOL CARPET MAT**

Hand knotted carpet in blues and rust with a geometric pattern. Made in Iran.

Size: 5'2" x 3'4"

200.00 - 300.00

