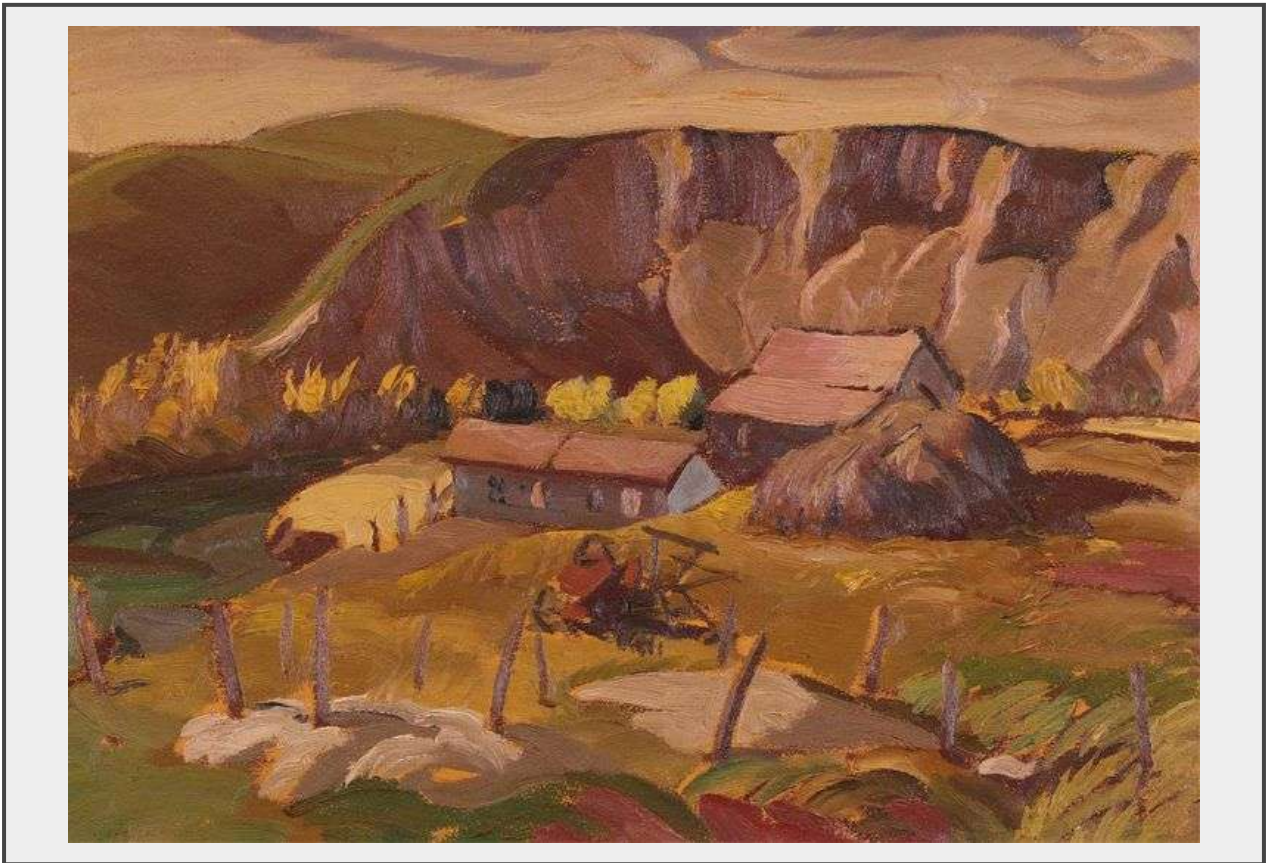


Sale Name: Hodgins Fall 2023 Fine Art Auction

LOT 85 - Henry George Glyde



Estimate \$ 4,000-6,000

Description

Henry George Glyde

Canadian ASA, CSGA, FCA, RCA [1906-1998]

ROSEBUD, ALTA.; ca 1944

oil on board

10 x 14 in. (25.4 x 35.6 cm)

signed & titled verso

Provenance: Canadian Art Galleries, Calgary AB

Note: In 1944, frustrated with the R.C.A.F., and having suddenly decided not to go back up the Alaska Highway, A.Y. Jackson exclaimed to Glyde, his painting partner, "To hell with them, let's go to Rosebud". In his autobiography "A Painter's Country" (p. 175), Jackson describes how the seeds of this trip were planted sixteen years prior, while on a train ride returning from the West with Frederick Banting. He observed from the rear platform, "...rolling country all cut up with coulees; the little village we saw from our perch was named Rosebud". Banting (who died in 1941), had replied, "We will have to come back here and paint some day", Glyde and Jackson, regular painting partners, spent two weeks in Rosebud: "...two weeks of lovely weather, wandering about the hills, painting farms and ranches....How Banting would have loved being there."

Quantity: 1

HODGINS HALLS



AUCTION GROUP

<https://www.hodginshalls.com/>