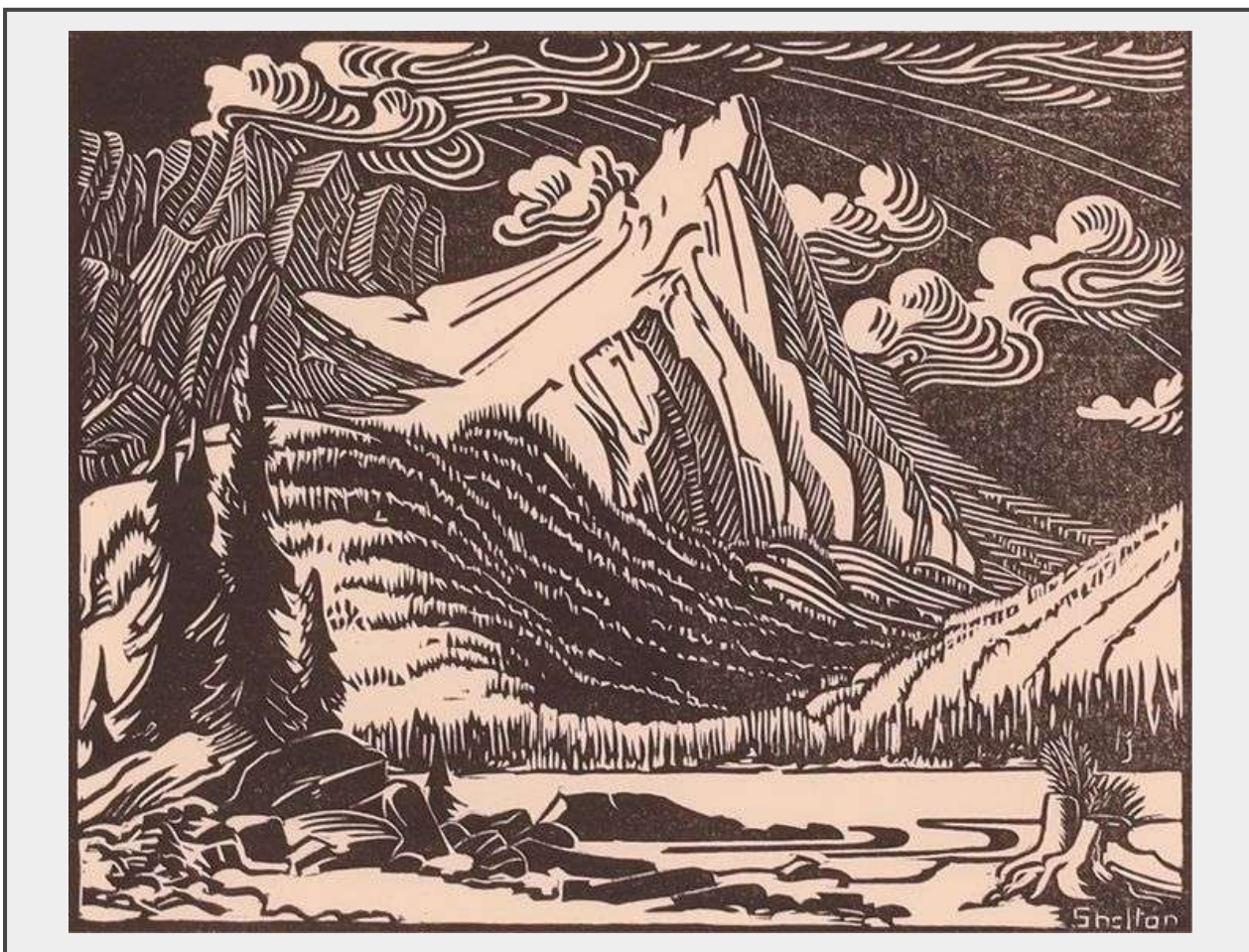


Sale Name: Hodgins: February 26 Fine Art Auction

LOT 170 - Margaret Dorothy Shelton



Estimate \$ 400 - 500

Description

Margaret Dorothy Shelton

Canadian ASA, CPE, CSGA [1915-1984]

MT. EDITH FROM SUNDANCE; 1941

linocut in one colour on paper

4.5 x 5.75 in. (11.4 x 14.6 cm)

signed in the block

Note: Alternately titled "Mt. Edith, Banff".

[Auction Results and Additional Information for this Artist](#)

Quantity: 1

HODGINS HALLS



AUCTION GROUP

<https://www.hodginshalls.com/>